



BETTER CARE FUND & TELECARE/TELEHEALTH - SUPPLEMENT APRIL 2014

Welcome to an additional supplement from the Technology Strategy Board (TSB) Knowledge Transfer Network and the Telecare Learning and Improvement Network covering extracts from draft and completed Better Care Fund Plans in England which make reference to telecare, telehealth or assistive technology.

Plans from 151 Health and Wellbeing Boards had to be submitted by 4 April 2014, however, some details will be revised over 2014/15 ready for April 2015.

It is now estimated that as much as £5bn may be reinvested in pooled funds to provide more integrated health and care services.

There are still many examples where the final plan has not yet surfaced through the local Health and Wellbeing Boards and been made public. There are many variations in how each local health and care economy plans to use the pooled funds in conjunction with housing and a range of providers.

There are currently 152 local social care authorities and 211 clinical commissioning groups. Bournemouth and Poole are working together and in Central/West London, the tri-borough consortium (Hammersmith and Fulham, Kensington and Chelsea, Westminster) has a joint plan.

The local authorities are listed alphabetically followed by a date for the best information as at 28 April 2014. The references to telecare, telehealth and assistive technology have been extracted – it is best to check the link provided for more information and context.

The supplement will be updated as more final plans are made public.

Newsletter supplement prepared by Mike Clark (@clarkmike) and brought to you by the Telecare LIN on behalf of the Technology Strategy Board. Newsletters and supplements are archived at www.telecarelin.org.uk



Barking and Dagenham

25 March 2014

Both **telecare** and **telehealth** can positively contribute to improved management of risks enabling people to remain at home and help people with anxiety feel more secure.

<http://moderngov.barking-dagenham.gov.uk/documents/b16791/Item%204%20Better%20Care%20Fund%20-%20Appendix%202%20Tuesday%2025-Mar-2014%2018.00%20Health%20and%20Wellbeing%20Board.pdf?T=9>

Barnet

20 March 2014

Developing greater self-management - How will this be delivered? - Increasing the use of **technology** to support self-care in the community such as **telecare** and **telehealth**.

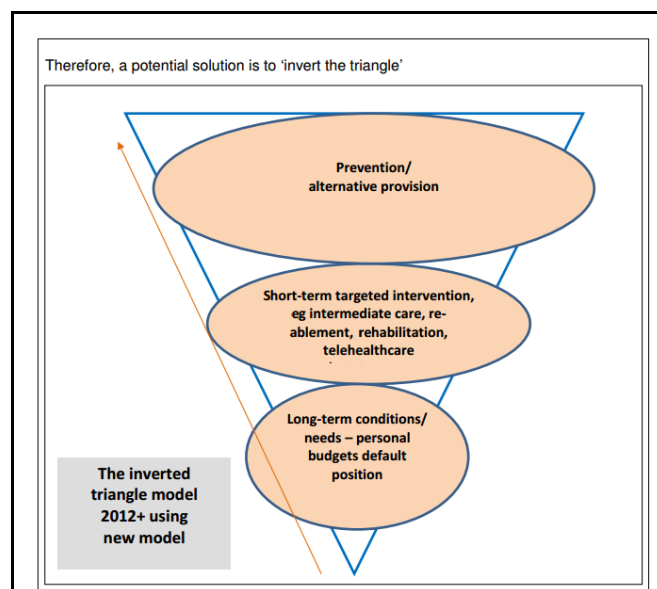
Multi-Disciplinary Team Meetings.....The planned co-ordination of care across health, social and voluntary care sectors, with a focus on self-care, education, early detection and intervention and the use of **telecare** will be the key to success.

<http://barnet.moderngov.co.uk/documents/s13808/Appendix%201%20Better%20Care%20Fund%20Planning%20template.pdf>

Barnsley

1 April 2014

Inverted triangle model –



The Programme Boards will deliver a range of projects and initiatives which, although not exclusively, will support the aims of the BCF and we would specifically expect these to deliver the following improvements over the next few years.... Improved information, signposting and triage across the system and particularly at Accident and Emergency to ensure alternatives are known, considered and accessed where appropriate including respite/temporary admissions to a care home, **telecare/telehealth**, rehabilitation and re-ablement.

....An expanded and fully integrated suite of intermediate tier services, focused on preventing admission to hospital as well as speeding discharge, to include primary care interfaces; virtual ward, re-ablement services including telecare and the voluntary sector.....

....Improved access to, and take-up of, telehealth and telecare provision

....Changes to the patient mix, 7 day working and reducing the number of non-elective admissions, unless managed effectively could affect the sustainability of the hospital. To maintain sustainability there are a number of considerations including....

- Critical mass – numbers of consultants required to sustain local specialist services i.e. Stroke, Cardiology – solutions may come from Technological Solutions i.e. telemedicine

<http://edemocracy.barnsley.gov.uk/0xac16000b%20x00584702>

Bath and North East Somerset

26 March 2014

No current telecare/telehealth information – checked at 28 April 2014

<http://democracy.bathnes.gov.uk/mgAi.aspx?ID=11802#mgDocuments>
<http://democracy.bathnes.gov.uk/documents/s29804/Agenda%20Item%2011%20-%20Appendix%20%20BNES%20Better%20Care%20Fund%20Plan.pdf>

Bedford

No current telecare/telehealth information – checked at 28 April 2014

<http://www.councillorsupport.bedford.gov.uk/documents/s25091/Item%206%20-%20Appendix%20Bedford%20BCCG%20Final.pdf>

Bexley

8 April 2014

Bexley also has a comprehensive telecare and emergency link line service, with initial discussions taking place around extension of this to include telehealth. Telecare is well embedded in local social care provision. Local evaluations suggest that this has already made savings for the council of more than £250k p.a. Integrated working offers opportunities for this to be more widely explored and extended.

....Extend opportunities for use of self-care and technology to promote wellbeing and Independence....

Together with a strong patient / service user centred focus on self-management, use of technology and a combined risk-stratification modelling, it is expected that there will be reductions in the numbers of people whose needs are exacerbated and consequently need higher level interventions (including hospital admission or long term care).

<http://democracy.bexley.gov.uk/documents/s58365/Item%2010.3%20App%20B1%20BCF%20report.pdf>

Birmingham

No public information currently available as at 28 April 2014

Blackburn with Darwen

12 March 2014

<p>Better Care Fund</p> <p>The introduction of the Better Care Fund will support local areas in developing and delivering integrated care to improve services and value for money, protect and improve social care services by shifting resources from acute services into community and preventative settings at scale and pace.</p> <p>The Fund creates an opportunity to create a shared plan for the totality of health and social care activity and expenditure that will have benefits way beyond the effective use of the mandated pooled budget. It also encourages Health and Wellbeing Boards to extend the scope of local plans and pooled budgets.</p> <p>Development of joint plans:</p> <p>As outlined in previous reports to Health and Wellbeing Board members (September 2013, January 2014), representatives of the CCG, NHS England and the Local Authority have been working together to establish the foundations for co-ordinated integrated delivery across health, social care, public health and the third sector.</p> <p>The plans focus on the development of integrated locality teams which will provide wrap around care to frail elderly and those with long term conditions and include:</p> <ul style="list-style-type: none">• 4 multi-skilled locality teams with aligned to GP practice population• Self care and early intervention• Early identification, diagnosis and case management, including 'Virtual Ward' services• Support for carers• Using new technologies• Development of a frail elder adult pathway

<http://94.236.33.182/CmiswebPublic/Binary.ashx?Document=11510>

Blackpool

No public information currently available as at 28 April 2014

Bolton

12 February 2014

Council asked for exemption from publishing Better Care Fund information

<http://www.democracy.bolton.gov.uk/cm5/Meetings/tabid/73/ctl/ViewMeetingPublic/mid/410/Meeting/12430/Committee/3123/Default.aspx>

Bournemouth

5 February 2014

Responding to need – the 'front-end' of support such as easy to access points of contact, improved information and advice, reablement/ intermediate care, **technology**, accessible homes (via district councils).

<http://www.bournemouth.gov.uk/CouncilDemocracy/Councillors/CouncillorCommitteeMeeting/BournemouthPoole,HealthWellbeingBoard/2014/02/05/Reports/Better-Care-Fund-and-Better-Together-Draft-Business-Case---Appendix-B--2-.pdf>

Bracknell Forest

13 February 2014

Use of **Telecare** to monitor effectively the health of individuals at risk.

<http://democratic.bracknell-forest.gov.uk/documents/s71026/Executive%20-%20BCF%20v2%201%20Annex%20A%20mpeb%202.pdf>

Bradford

Details of Board documents not available – as at 28 April 2014

Brent

9 April 2014

No telecare/telehealth references – checked at 28 April 2014

http://democracy.brent.gov.uk/documents/s23095/BCF_operating_plan.pdf

<http://democracy.brent.gov.uk/documents/s22084/brent-better-care-fund-planning-template.pdf>

Brighton & Hove

5 February 2014

I am encouraged to maintain my independence: Rachel would be offered a period of intensive, re-abling homecare and identify suitable **Telecare** and other equipment and work with her to get used to a new way of managing her personal care to build her confidence and improve her level of independence....

....My health conditions are under control. Rachel will be provided with simple devices (**Telehealth/ Telecare**) and support to allow her to self-manage on a daily basis....

....Further investment in rehabilitation/re-ablement (including **Telecare**) to reduce hospital admissions and admissions to residential and nursing home care

[http://present.brighton-hove.gov.uk/Published/C00000826/M00005071/AI00037893/\\$20140131105423_005420_0021425_Item43BetterCareFundPlanFINALappendix.docx.pdf](http://present.brighton-hove.gov.uk/Published/C00000826/M00005071/AI00037893/$20140131105423_005420_0021425_Item43BetterCareFundPlanFINALappendix.docx.pdf)

Bristol

11 February 2014

- **Technology**
- **Telehealth** for Irene
- **Telecare**
- Bristol CareLine
- Assistive Technology (included LA provided adaptations)
- Advice on Internet/Libraries WellAware (with better promotion)
- LinkAge
- University of Bristol developing technology that collects data within a person's home
- Training befrienders in technology (Skype)
- iPad use / reminiscence therapies

....**Telehealth, Telecare**, Assistive **Technology** - Greater use of Assistive Technology to help users manage their conditions more effectively such as Long Term Conditions, (Stroke, Dementia, Diabetes, Cancer, Asthma, COPD).

https://www.bristol.gov.uk/committee/2014/ot/ot049/0211_5.pdf

Bromley

30 January 2014

Expand the use of access to telehealth and health coaching to maximise independence and wellbeing....

....£1m Increase the utilisation of telehealth/and self-management of long term conditions to maintain independence....

...We will invest jointly in empowering local people through effective care navigation and a menu of self-management options ranging from advice and information, education, support for carers, access to telehealth and health coaching to maximise their independence and wellbeing.

<http://cbs.bromley.gov.uk/documents/s50017848/Appendix1BCF280114Final.pdf>

Buckinghamshire

February 2014

Types of services: Prevention Matters, Telecare

http://democracy.buckscc.gov.uk/documents/s48089/Buckinghamshire_Integrated%20Care%20for%20Older%20People_Case%20for%20Change_v1%20021.pdf

Bury

30 January 2014

Embracing the potential for innovation in telehealth / telecare

<http://councildecisions.bury.gov.uk/documents/s1916/24%201%2014%20bcf-pln-template%20part%201%20v3%20working%20document.pdf>

Calderdale

11 February 2014

Council decision to make plan exempt from public viewing

http://www.calderdale.gov.uk/council/councillors/councilmeetings/results.jsp?committee=190&p_SQ_ID=4180655&phrase=N&type=agenda&offset=0&id=160952631

Cambridgeshire

13 February 2014

No telecare or telehealth references – as at 28 April 2014

<http://www2.cambridgeshire.gov.uk/CommitteeMinutes/Committees/AgendaItem.aspx?agendaItemID=9021>

Camden



4 April 2014

<http://democracy.camden.gov.uk/documents/s33621/Item%209a.%20Better%20Care%20Fund%20template%20final.pdf>

....continued development of telecare and telehealth to prevent unnecessary hospital or care home admissions

Approximately 25% of the Better Care Fund transfer is the existing section 256 agreement which will continue as part of the overall transfer our section 256 agreement funds the following:

1. Adaptations and Equipment – continuation of additional resources to assist in limiting hospital discharge delays caused by waiting for adaptations/equipment.
2. Telecare and Telehealth – Continued development of telecare and telehealth services to prevent unnecessary hospital or care home admissions.

<p>ASSISTIVE TECHNOLOGY:</p> <p>*EXISTING</p> <p>Telehealth - To mainstream, roll out and rationalise Telecare/Telehealth Service between health and social care.</p> <p>Increase Telecare uptake by older people, people with disabilities and dementia</p> <p>Telehealth –care is a central part of the strategic re-orientation of Camden's social and health care towards greater preventative approaches for people to stay active, healthy and as independent for as long as possible in their home and community of choice. The services will help promote peoples wellbeing and independence instead of waiting for people to reach a crisis point. Camden is developing a Telehealth-Care Strategy which will be finalised early 2014.</p> <p>In 2012/13, 527 people were supported with Telecare sensors and 7 people in receipt of Telehealth monitors. There are ambitious targets to increase this service take-up in coming years. In 2013/14, anticipated numbers of people supported</p>	<p>At least 100 telehealth units to be provided to clients by March 2015, increasing to 170 units a year by 2017/18. (2014/15 minimum 100 new clients) (2015/6 minimum 150 new clients)</p> <p>To increase the number of people with telecare sensors by 20% by April 2014. This means 659 Camden residents with telecare sensors and Careline Telecare alarm buttons. A further 25% a year from 2014/15 onwards. This will mean that the number of customers will increase from 949 to 1,606 by April 2016.</p> <p>Increased user awareness, self-care management and experience of care. At least 80% clients report telehealth has helped understand how to manage their long term condition better.</p> <p>At least 80% clients report telecare has helped them retain their independence</p>		<p>E400,000</p>	<p>E1,142,000</p>
<p>49 Page</p>				
 <p>Camden Clinical Commissioning Group</p>				
<p>with Telecare will increase to 737 and Tele-health 32 (and an annual increase of 100 users per annum thereafter)</p>	<p>Reductions in permanent admissions of older people (aged 65 and over) to residential and nursing care homes Baseline and target to be agreed by steering group in April 2014</p> <p>Increased proportion of older people (65 and over) who were still at home at 91 days after discharge from hospital into reablement/rehabilitation services Baseline and target to be agreed by steering group in April 2014.</p>			

<http://democracy.camden.gov.uk/documents/s33621/Item%209a.%20Better%20Care%20Fund%20template%20final.pdf>

Central Bedfordshire

4 April 2014

Planned changes and key success factors....

Ensure the full use of new technologies within housing schemes, such as telecare.

The Council recognises the need to maintain current arrangements of providing social care support to adults and older people assessed as having moderate, critical, or substantial needs. Maintaining its moderate eligibility criteria is critical to preventing reliance on acute/institutional care. This will continue through reablement, additional funding for Disabled Facilities Grants/Minor works, targeted provision of community equipment, community alarms, and other telecare solutions, as well as investment in support to local communities to increase social capacity, such as, good neighbour/village care schemes.

....Funding increased capacity to meet growing demand for reablement, telecare, and associated interventions to reduce increasing demand and costs....

<http://www.centralbedfordshire.gov.uk/modgov/documents/s49349/Better%20Care%20Fund%20-%20Final%20Submission%20-%20Part%201.pdf>

Cheshire East

25 March 2014

Further exploration of assistive **technology** solutions for care and **telehealth** options will be part of this service development in addition to seeking new and innovative care and support solutions not currently available.

<http://modern.gov.cheshireeast.gov.uk/ecminutes/documents/s33628/Better%20Care%20Fund%20Submission%2004042014%20GK%20second%20draft.pdf>

Cheshire West and Chester

13 March 2014

Avoidable emergency admissions - The use of trend data highlights a small increase this year, but partners are confident that the schemes developed within our BCF submission (**telecare**, extra care housing, and continued use of the DFG) will help to lower this figure....

...**Telecare**: By utilising **technology** this service supports residents to live independently and securely in their own home. We will use the BCF to support the extension of **telecare** across the Borough, extending the number of customers receiving the service from 264 to nearly 2,000 - £1,674m in 2014/15 and £2,448m in 2015/16....

...Investment in the following services with a proven track record of managing demand - Extra Care Housing, **Telecare**, Reablement

<http://cmttpublic.cheshirewestandchester.gov.uk/documents/s35764/BCFDraftExectemplateOneV22.pdf>

City of London

1 April 2014

The City has been adapting to the increasing demands of the aging population through increased provision in **telehealth**, preventing social isolation and in creating a dementia-friendly City....

...Those with long term conditions are supported to manage their condition at home and this is supported with the use of **Telecare** to help prevent acute admissions. Where admission is necessary, our Reablement and OT Service and our community services manage the rehabilitation processes and offer support, minimising the chances of readmission....

...Early identification - We have undertaken to identify residents who are at risk of vulnerability. We will use the risk stratification tool alongside our GP practice and those where our residents are registered in Tower Hamlets and Islington, to identify not only those residents who are at high risk and who are housebound, but those who are vulnerable to ensure that we can meet their needs at an early stage, reviewing potential housing needs to identify whether aids and adaptations, assistive **technology** or **Telecare** / Telemed may be required to support the resident to maintain their independence....

...We currently use aids and adaptations, assistive **technologies** and **Telecare** to ensure that people can stay safely in their home for longer where this is their preference and we have been able to effectively reduce the number of people being admitted to residential and nursing care following acute admissions....

...By enhancing the preventative services we offer, we will be aligning our position with the Care Bill well in advance of it being enacted and therefore increasing the opportunity of making a difference to service users in a timely way. This takes on importance particularly for those residents who might benefit from schemes such as **Telecare**. As the major provider of accommodation within the City, our Housing services can enhance our use of aids and adaptations of the clients who are most in need, but also installing **Telecare** for those who might otherwise require a GP visit or even who might be admitted.

<http://democracy.cityoflondon.gov.uk/documents/s34505/City%20of%20London%20BCF%20Draft%20Plan%20v5.pdf>

Cornwall

3 April 2014

Multiple documents with **telecare**, **telehealth** references <http://bit.ly/1rkmoil>

County Durham

3 March 2014

By 2018/19 we will....Ensure greater use of **telecare** to support people maintain independence in their own home.

<http://democracy.durham.gov.uk/documents/s38807/Item%209%20-%20Appendix%202%20-%20County%20Durham%20BCF%20plan%20Part%201.pdf>

Coventry

February 2014

follows:

Scheme One: Short Term Support to Maximise Independence

Providing integrated support to individuals in a timely and effective manner can both reduce the need for long term support from health and/or social care and reduce demand on acute services through preventing hospital attendance/admission for conditions that could have been avoided through more timely and integrated community based support.

Key to the delivery of this will be the development of integrated teams comprising of health, social care and allied professions and the effective use of new technologies to support the delivery of integrated care. This area will be further progressed through a 'Hothouse Event' (March 2014) which will include professionals and practitioners from local NHS providers, primary care, social care and commissioners.

A number of key groups will benefit from this integrated approach to short term support including:

The following six stages of the pathway will be improved as follows:

Pre-diagnosis

- Coventry to become a dementia-friendly city, where there is greater awareness and reduced stigma of dementia.

Diagnosis

- Continued development of an age-independent, multi-disciplinary Dementia IPU (Integrated Practice Unit), to ensure timely and accurate diagnosis.

Post-diagnostic support

- Develop a 'menu' of post-diagnostic support opportunities.

Living with dementia

- Increased availability of technology to support people with dementia and their carers, including Telecare, Telehealth and stand alone items, such as GPS trackers.

<http://modern.gov.coventry.gov.uk/documents/s15315/Better%20Care%20Funding%20Planning%20Template.pdf>

Croydon

12 January 2014

The use of **telecare** and **telehealth technologies** will continue to be key tools for G.P's and community health services in reducing health inequalities in the borough whilst managing demand as the move from acute to primary care services gathers pace.

....These MDTs work with the voluntary and community sector to ensure that those not eligible for Council funded social care services, or not experiencing acute health needs can receive support to remain healthy and maintain their independence through signposting; with the MDTs then monitoring patients/clients to ensure that the appropriate services are being accessed in order to prevent any decline through appropriate early intervention. This will include access to reablement services and **telecare** which will provide targeted input with the aim of preventing the need for acute services or a longer term social care package of care....

....This will be supported through G.Ps and health professionals having access to **telehealth technologies** to enable the monitoring of patients without requiring them to take up surgery time, and help maximise the capacity of community nursing services by releasing them to focus on high needs patients. G.Ps will be supported through the continued development of a central **telehealth** triage service currently hosted by the Community Matron Service, and the Council's local authority trading company (Croydon Care Solutions Ltd) who will undertake installation, maintenance, and recycling of equipment....

....A preventative approach is taking place alongside treatment and service provision at all levels. Patients as part of the delivery of clinical pathways are and will be involved in decisions relating to their health whenever possible. The CCG and the Local Authority have taken a progressive approach to the use of **telehealth** but also the use of new **technologies** such as Apps and websites....

....Recent review of Mental Health Older Adults (MHOA) services undertaken in Croydon highlights that the borough already has a number of both community and hospital based services for older people with mental health problems including dementia, such as memory services, community mental health teams, carer's support, equipment services, major adaptations, **telecare/telehealth**, domiciliary care as well as neighbourhood luncheon clubs, faith groups etc. However, it has been concluded that a lack of integration between health and social care is leading to duplication of work and an inefficient use of resources; which is potentially impacting on the maximisation of patient/client outcomes.

<https://secure.croydon.gov.uk/akscroydon/users/public/admin/kabatt.pl?cmte=WEL&meet=6&href=/akscroydon/images/att3432.pdf>

Cumbria

11 April 2014

Early intervention - We will support more people to retain their independence and control over their lives.

This will be achieved through robust and innovative partnerships with the third-sector, housing and other groups. Over the next five years, there will be a programme of regular review to ensure these approaches have a clear evidence-base and deliver measurable outcomes. Individuals will have their independence, safety and wellbeing maximised through integrated rehabilitation and reablement services, and access to assistive **technologies**, equipment and housing adaptations, and carers' support....

....Redesign pathways across health and social care to integrate reablement and rehabilitation services. This will enable more people to maximise their independence through therapy-led services. This will also ensure joined-up access to housing, the third sector, assistive **technology** and carers' support....

...We will develop awareness across organisations of statutory duties through the pooling of resources and the investment and promotion of services to reduce the level of need - including rehabilitation and reablement, assistive **technology** and home adaptations to promote safety and independence.

<http://councilportal.cumbria.gov.uk/documents/s27722/Cumbria%20Better%20Care%20Fund.pdf>

Darlington

4 April 2014

Identification of high risk patients leads to a pathway of care including the self-care tools available to moderate risk group with additional support in care planning and assistive **technologies**

<http://www.darlington.gov.uk/PublicMinutes/Health%20and%20Well%20Being%20Board/April%20202014/Item%204%20-%20Appendix%20A.pdf>

Derby

13 March 2014

No current telecare/telehealth information – checked at 28 April 2014

<http://bit.ly/PlbPtf>

Derbyshire

No details of plans as at 28 April 2014

http://www.derbyshire.gov.uk/council/meetings_decisions/meetings/health_wellbeing_board/default.asp

Devon

16 January 2014

A Joint approach to commissioning of community equipment, minor adaptations and **telecare** is already advanced and will be procured in early 2014.

<http://www.devon.gov.uk/loadtrimdocument?url=&filename=SCC/14/14.CMR&rn=14/WD12&dg=Public>

Doncaster

13 March 2014

No current telecare/telehealth information – checked at 28 April 2014

<http://www.doncaster.gov.uk/db/chamber/default.asp?Nav=Meeting&MeetingID=6583>

Dorset

28 March 2014

Social Care Grant Schemes - Additional investment 14/15 **Telecare**/Joint Equipment - £200,000

[http://www1.dorsetforyou.com/COUNCIL/commis2013.nsf/6B2DCB2A779013FC80257CA200342F22/\\$file/05%20Better%20Care%20Fund%20and%20Better%20Together%20Business%20Plan%20with%20appendices%20attached.pdf](http://www1.dorsetforyou.com/COUNCIL/commis2013.nsf/6B2DCB2A779013FC80257CA200342F22/$file/05%20Better%20Care%20Fund%20and%20Better%20Together%20Business%20Plan%20with%20appendices%20attached.pdf)

Dudley

26 March 2014

No detailed information about the plan from Board agendas – as at 28 April 2014

Ealing

27 March 2014

Wider promotion of **telecare**....

....Explore a number of enablers and test these such as, Care Planning, and Assisted Living **Technology**, and sharing of information between professional groups.

<http://bit.ly/1mPNwbE>

East Riding of Yorks

2 April 2014

No current telecare/telehealth information – checked at 28 April 2014

<http://www2.eastriding.gov.uk/council/committees/health-and-wellbeing-board/>

East Sussex

13 Feb 2014

Developments in diagnosis, treatment and assistive **technology** means we can do far more to support people at home and in the community rather than provide care in traditional bed based settings....

....Promoting Health and Supported Self Management – empowering clients to improve their health maximise self-management and choice. Ensuring that patients are offered a personal care plan and have appropriate information about how to manage their condition e.g. through education, support and assistive **technology**....

<http://www.eastsussex.gov.uk/NR/rdonlyres/C4B5FBC6-28EF-4190-A465-82EA27C10783/36206/Agendaitem9.pdf>

Enfield

20 March 2014

Example initiatives being considered for BCF support – Assistive **technologies**/Tele Health

We expect to see as a result....more self-management of long term conditions through increased use of **telehealth**/**telecare**....

....These solutions will be augmented through the deployment of assistive **technology**, including **telecare** and **telehealth** known to be under-utilised in Enfield, to ensure that people are as safe, healthy and live with the condition as independently and effectively as possible and an appropriate planned or urgent response is available to support people to live at home (avoiding inappropriate hospital admission). We are currently piloting this to inform the new system....

....In addition to the ongoing support described above, there is targeted provision of equipment, reablement, community alarms and other **telecare**, aimed to improve outcomes for local citizens and either reduce or avoid the need for ongoing care or complement ongoing support....

Funding increased capacity to meet growing demand for reablement, **telecare**, and associated interventions to reduce ongoing demand and cost....

Essex

26 March 2014

Complex information from all CCGs and local authority -

Example - involving patients in co-creating a personalised self-management action plan, which could include education programmes, medicines management advice and support, **telecare** and **telehealth** for self-monitoring, psychological interventions and patient access to their own records

<http://bit.ly/1fp2oLN>

Final submissions:

<http://cmis.essexcc.gov.uk/essexcmis5/CalendarofMeetings/tabid/73/ctl/ViewMeetingPublic/mid/410/Meeting/3078/Committee/134/SelectedTab/Documents/Default.aspx>

Gateshead

Difficulties accessing website information from Health and Wellbeing Board – as at 28 April 2014

Gloucestershire

1 April 2014

We currently provide and will continue to develop the following....Making greater use of **technology** to support individuals at home, such as **Telehealth**, **Telecare** and online self-management programmes....

....Over the last few years there has been an increase in placement to residential or nursing homes, particularly for people being placed in care homes following discharge from hospital. The CCG has made additional funding available for services based in the community and increased reablement capacity and new **telecare** arrangements are all expected to impact on this trend in the latter six months of 2013/14....

Priority areas we will be exploring over the coming months.... The use of **technology** in supporting home-based care including potential joint investments and benefits from **Telehealth** and **Telecare**....

....2014/15 funding - **Telecare** including the **Telecare** Change Project £384,000....

....Underpinning all of our plans is a focus on systems that support and remove barriers to integrated care through....Using **technology** to develop networked, personalised health and care services....

...The service will introduce individuals to the potential of assistive technologies and, where these are to be employed, will ensure individuals are familiarised and comfortable with their use.

<http://glostext.gloucestershire.gov.uk/documents/s20601/Better%20Care%20Fund%20HWB%20-%20Final%20Submission.pdf>

Greenwich

Detailed information not available as at 28 April 2014

<http://committees.greenwich.gov.uk/ieListMeetings.aspx?CId=500&Year=0>

Hackney

February 2014

Telecare

We are relaunching Telecare to fulfil our aspiration to position Telecare at the heart of care and support, increasing opportunities for independence as well as delivering savings to benefit the system....

Telecare will deliver a local service model to increase take-up and application across a wide range of need groups, benefiting adults with disabilities as well as older people, and those who may benefit on a preventative basis....

...Work is being undertaken to...
embed Telecare within reablement and intermediate care....

...make clear Telecare requirements within future care and support specifications....

...deliver a platform alongside which Telehealth can develop, scoping further opportunities for integration.

...All the domiciliary care that we offer is based on the principles of reablement and we promote the use of assistive technology such as Telecare where these will enable people to remain safe and meet their care Needs....

...We will utilise opportunities for sharing information through new technology to tailor services to individual need and enable those who are able to do so, to manage their own conditions with confidence

<http://mginternet.hackney.gov.uk/documents/s35500/Appendix%201.pdf>

<http://mginternet.hackney.gov.uk/documents/s35499/Draft%20Better%20Care%20Fund%20Plan.pdf>

Halton

12 March 2014

The focus is on....Use of enabling technologies such as telecare and telehealth....

...The following schemes will be implemented....

ii) Further develop our approach to Telecare and Telehealth interventions to support people to live as independently as possible within the community. Services will be tailored to individual needs and encourage a whole system/whole person approach to care

....Providers have advised how pathways can be improved, teams reconfigured to increase quality and productivity, systems be more efficient and teams more integrated. These changes coupled with the introduction within care pathways of appropriate **technology** will enable people to live independently, avoid emergency admissions, benefit from reablement services if necessary and have a better patient experience....

....**Technology** will be central to supporting people to improve and maintain their health and well-being, offering a range of platforms and sophistication dependent on intensity of need and desired outcomes.

<http://moderngov.halton.gov.uk/documents/s32812/BCF.pdf>

<http://moderngov.halton.gov.uk/documents/s32740/Approval%20of%20the%20draft%20Better%20Care%20Fund.pdf>

Hammersmith and Fulham

24 March 2014

Tri-borough (with Kensington and Chelsea/Westminster)

At the heart of this will be integrated Community Independence teams that will provide a rapid response to support individuals in crisis and help them to remain at home. Community Independence will also work with individuals who have lost their independence through illness or accident and support them to build confidence, regain skills and, with appropriate information and support, to self-manage their health conditions and medication. The service will introduce individuals to the potential of assistive **technologies** and, where these are to be employed, will ensure individuals are familiarised and comfortable with their use....

....Undertake a full review of the use of **technology** to support primary and secondary prevention, enable self-management, improve customer experience and access, and free up professional resources to focus on individuals in greatest need.

http://www.lbhf.gov.uk//Directory/Council_and_Democracy/Committee_reports_minutes_and_agendas/Committee_Archive/homepage.asp?mgpage=ieListDocuments.aspx%26amp%3BCld%3D463%26amp%3BMId%3D2782%26amp%3BVer%3D4

Hampshire

*Updated on 6 May 2014

It is proposed to build the additional resources identified in the BCF and existing pooled resources to commission services jointly to deliver enhanced personal care and reablement services which will reduce hospital readmissions and admissions to residential and nursing home care. This will include....Access to a wide range of **telehealth** and **telecare**....

The plans will delivery the following changes to ensure high quality, sustainable health and care system for Hampshire....Our Community Providers will implement new models of service delivery that they have co-produced, drawing on assistive **technologies** where this is appropriate to do so....

Meeting need and managing demand....Using **technology** to add value to care and support packages

http://www3.hants.gov.uk/councilmeetings/meetingssummary.htm?date_ID=1300

Haringey

11 February 2014

More specifically, Haringey will take forward the development of...

Telehealth and Telecare, provided 7 days a week, to enable people to remain in their own homes with an increased sense of security while providing carers with reassurance that their loved ones are being monitored;

....Mainstreaming telecare/telehealth.

[http://www.minutes.haringey.gov.uk/Published/C00000771/M00006666/AI00036229/\\$APPENDIX1a.docx.pdf](http://www.minutes.haringey.gov.uk/Published/C00000771/M00006666/AI00036229/$APPENDIX1a.docx.pdf)

Harrow

19 March 2014

Telehealth pilot – we will continue the development of telehealth pathways with the use of private providers aligned to our existing pathways i.e. STARRS. For 2014/15 we will expand the remit of the telehealth service to also include heart failure in addition to the existing COPD pathway. This will increase the impact of the services for patients at risk of exacerbations of these two clinical conditions.

http://www.harrow.gov.uk/www2/documents/s114005/HWBB%2019%2003%2014_Appendix%203%20Harrow%20Better%20Care%20Fund%20plan.pdf

Hartlepool

26 March 2014

Funding currently allocated through the NHS Transfer to Social Care has been used to enable the local authority to sustain the current level of eligibility criteria and to maintain existing integrated services that support timely hospital discharge, delivery of reablement and telecare services, commissioning of low level support services and support for carers. Investment in these services will need to be sustained to maintain this as the social care offer for Hartlepool and to maintain current eligibility criteria and increased in order to deliver 7 day services and to address the implications of the Care Bill, which will require additional assessments to be undertaken for people who did not previously access social care and provision of further support for carers.....

http://www.hartlepool.gov.uk/egov_downloads/26.03.14_-_Health_and_Wellbeing_Board_Agenda.pdf

Havering

13 February 2014

It is anticipated that other priorities of the first two years ('14-'16) of the five year plan ('14-'19) will include... Extending the telecare and telehealth solutions, as well as roll out across Havering. (Building Blocks 2/3)

<http://democracy.havering.gov.uk/documents/s10872/Appendix%20finance%20removed.pdf>

Herefordshire

26 March 2014

The Council has recognised the importance of a range of prevention and early intervention approaches including Telecare, community equipment and reablement in keeping people independent but due to the need

to prioritise meeting its statutory responsibilities it is only able to offer these interventions to those with eligible need....

....Both in order to deliver 7 day services and implement core prevention pathways (including **Telecare**, information and advice and reablement) in order to reduce demand and provide long term demand management which will allow disinvestment from acute 16 and crisis social care.

<http://councillors.herefordshire.gov.uk/documents/s50018105/BCF%20V5%20Draft%20Plan%20Hereford%2014%202%2014.pdf>

Hertfordshire

28 March 2014

No current telecare/telehealth references – checked at 28 April 2014

http://www.hertsdirect.org/your-council/civic_calendar/healthwellbeingboard/17876283/

Hillingdon

1 April 2014

Some themes emerge from these sources, including... **Telecare** line is seen as important in supporting older people and in “taking away worries”

....Pre-crisis management: Availability of rapid care bundle (includes: medical monitoring support, domiciliary care, **telecare**, helpline and others as necessary)....

....As part of Better Care Fund, we will develop the model further by....

Creating a joined up, single, intermediate care team which will include reablement, community rehabilitation, equipment, **telecare** and homecare.

<http://modgov.hillingdon.gov.uk/mgConvert2PDF.aspx?ID=19918>

Hounslow

27 March 2014

Underpinning all of our plans is a focus on systems that support and remove barriers to integrated care through....Using **technology** to develop networked, personalised health and care services

The service will introduce individuals to the potential of assistive **technologies** and where these are to be employed, will ensure individuals are familiarised and comfortable with their use.

<http://democraticservices.hounslow.gov.uk/documents/s88063/BCF%20PAPERS.pdf>

Isle of Wight Council

6 March 2014

No details in Board papers.

<http://www.iwight.com/Meetings/committees/Health%20and%20Wellbeing%20Board/6-3-14/PAPER%20C.pdf>

Isles of Scilly

Unable to locate details as at 28 April 2014

<http://openlylocal.com/councils/67-Council-of-the-Isles-of-Scilly>

Islington

12 March 2014

Islington has already received investment for social care where there are clear benefits to health. This has been invested broadly and includes....The development of the Council's **telecare** offer that has seen the use of **telecare** increase year on year....

....Patient activation and self care are areas of work where we want to further develop our offer. In 2014/15 we will consider how we can develop our offer around **telecare** and **telehealth** both to support professionals to work differently, for example, consulting via skype to using mobile devices or applications to support self care....

....The work programme will include not only looking at what services will align with localities but also consider....The expansion of teleconferencing to include those identified further down the triangle of risk

<http://democracy.islington.gov.uk/download/meetings/healthandwellbeingboard/healthandwellbeingboard/12thmar2014/1a%20Better%20Care%20Fund%20Final%20submission.pdf/get.aspx>

Kensington and Chelsea

24 March 2014

Tri-borough arrangements – see Hammersmith and Fulham

<http://bit.ly/Mnbh1h>

Kent

26 March 2014

We will systematise self-care/self-management through assistive **technologies**, care navigation, the development of Dementia Friendly Communities and other support provided by the voluntary sector....

....Enabling Prevention and Self Care - Assistive **Technology**....

....West Kent: Ensuring people have anticipatory care plans in place. Enable consultant access via **technology**....

....Self-care and self Management-West Kent: Co-produce with patients, service users, public and voluntary and community sector improvements in self-care. Including care navigators, advanced assistive **technology**, patient held records and the development of Dementia Friendly Communities....

....Protection social care services in Kent means ensuring that people are supported to maintain their independence through effective reablement (including the appropriate use of assistive **technology**), preventative support such as self-management, community resilience and support for carers, mental health and disabilities needs in times of increase in demand and financial pressures and the effective implementation of the Care Act.

<https://democracy.kent.gov.uk/documents/s45579/Item%205%203%20Appx%20A%20Kent%20BCF%20template%20pt1%20v2.pdf>

Kingston upon Hull

25 March 2014

Our Strategy identifies the need to.... implement **telehealth** and **telecare technology** for health, housing and social care use to support people in their own homes and empower them to manage their own health and wellbeing....

....Case study for Catherine: **Telecare** and other **technology** solutions are in place to ensure contact can be made with her daughter on a daily basis....

....Primary care and self care initiative - **Telecare** and **telehealth** provision – promote its use and rollout....

....**Telecare** and **telehealth** provision – promote its use and rollout. 900 people being monitored by March 2015.

<http://bit.ly/1i2az0D>

Kingston upon Thames

1 April 2014

We have established a substantial range of services but there is potential to do more, for example.... Expansion to increase responsiveness or environmental / adaptations / equipment support e.g. Careline, **telecare**, adaptations

There is a much improved use of **technology** to enable communication with specialists e.g. GP hotlines (telephone / Skype) to consultants, sharing of clinical records

<http://moderngov.kingston.gov.uk/documents/s51459/Better%20Care%20Fund%20plan%20-%20Kingston%20V5%201.pdf>

Kirklees

27 March 2014

Developing the assistive **technology** and **telecare** infrastructure, including mobile response Services.

<http://www.kirklees.gov.uk/Secure/meetings/pdfs/0314/HWBB27031450829D.pdf>

Knowsley

2 April 2014

This transformation will ensure that residents will.... Receive assistive **technology**, equipment, **telehealth** and **telecare** as part of a prevention programme....

Funding currently allocated under the Social Care to Benefit Health grant has been used to enable the local authority to achieve the following.... **Telecare**

<http://councillors.knowsley.gov.uk/documents/s28038/BCF%20Plan%20Final%20Apr%202014%20app1.pdf?StyleType=standard&StyleSize=none>

Lambeth

No recent information as at 28 April 2014

Lancashire

29 April 2014

There will be a focus initially on the frail elderly and carers - Joint investment in **Telecare** to ensure it is funded for growth and health and care staff are fully deploying its potential....

....Scope potential for joint investment and expansion of **Telecare** services with County Council....

....Partners are also progressing IT and **Technology** initiatives and digital strategies that will enable change across multiple organisations – with further work to develop data sharing and infrastructure, use of **technology** for e.g. email and text and Skype to overcome unnecessary delays in the system, provide viable alternatives to face to face appointments and sharing of patient information to facilitate joint care....

....Undertake a full review of **technology** use to support primary and secondary prevention, enable self-management, improve customer experience and access and free up professional resource to focus on individuals in greatest need.

<http://council.lancashire.gov.uk/documents/s39041/BCF%20Appendix%20A.pdf>

Leeds

27 March 2014

Provide high quality services in the right place, backed by excellent research, innovation and **technology**- including more support at home and in the community, and using hospitals for specialised care....

....These efficiencies have been delivered through a range of measures including the significant decommissioning of in-house services, service redesign and investment in preventative services, together with the implementation of innovative, jointly commissioned and provided social care schemes including the South Leeds Independence Centre, Reablement Service, Integrated Neighbourhood Teams, the Assistive **Technology** Hub all as part of our ongoing 'Better Lives' programme....

....Together with the necessary platforms for **technology** to support self-care and self-management, "big data" solutions will support more accurate commissioning and service provision decisions in line with people's experiences of care – which will lead to better outcomes for the people of Leeds.

<http://democracy.leeds.gov.uk/documents/s111603/Part%201.pdf>

Leicester

3 April 2014

<http://www.cabinet.leicester.gov.uk/documents/s62567/Leicester%20City%20Better%20Care%20Fund%202nd%20Draft.pdf>

We will deliver better care through the digital revolution by harnessing **technology** and applying it to better the services we offer. This includes a truly single point of access for professionals working within our system, an electronic single assessment process to eliminate duplication and use of **telehealth** to keep our citizens at home and independent....

....We will use the Better Care Fund to achieve our aims....To empower our population to be both better informed and better manage their own health and wellbeing using a range of traditional and digital media and **technology**....

Delivering 'great' experience and improving the quality of life of patients with long term conditions using available **technology** and patient education programmes, reducing avoidable hospital stays....

....Increase our offer of assistive **technologies**....

In addition, we will be monitoring more detailed key performance indicators as markers of success. These may include, as examples....People in receipt of assistive **technologies**....

....We will use the Better Care Fund to....Increase our offer of assistive **technologies**, particularly for falls and specific conditions such as COPD and hypertension, so that patients feel safe and remain independent and manage their own health proactively.

<http://www.cabinet.leicester.gov.uk/documents/s62567/Leicester%20City%20Better%20Care%20Fund%202nd%20Draft.pdf>

Leicestershire

1 April 2014

Greater use of **telecare** and **telehealth**....

....2015/16 - IT Enablers – data sharing, care plans, **telehealth** & **telecare** - £650,000

<http://politics.leics.gov.uk/documents/s91868/BCF%20Supplementary%20-%20Appendix%20A.pdf>

Lewisham

25 March 2014

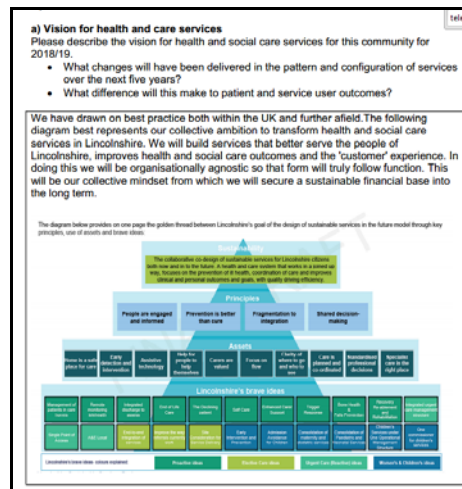
Given the scale of the programme, a number of workstreams, each overseeing individual projects, have been established to take this work forward....

II. Supporting independence - the development of effective systems and processes for the identification of need and support, diagnosis and management, including enablement, **telecare**, and equipment, with a specific focus to support admission avoidance and hospital discharge

<http://councilmeetings.lewisham.gov.uk/documents/s28167/05%20Better%20Care%20Fund%20planning%20template%20part%201.pdf>

Lincolnshire

25 March 2014



<http://lincolnshire.moderngov.co.uk/documents/s5338/6a%20Appendix%20A%20BC%20Fund%20Part%201%20Final%2010214.pdf>

Liverpool

13 March 2014

Admission to acute care: The services brought together under the bid are designed to reduce individuals' length of stay in hospitals or hospices, facilitate their return home to lower level support and reduce re-admissions. Actions will include personalised planning, ensuring that systems are in place to speed up assessments of people in hospital and facilitating supportive discharge by raising awareness of and utilising support services and homebased telemonitoring options.

The case study below describes one of the activities being undertaken through the Mi (More independent) initiative.

Assistive Technologies

Mi is an innovative collaboration between NHS, Public, Private, Third Sector and Housing organisations. Liverpool CCG (Lead Partner for Mi) allocates clinical leadership to embed and align Mi with the Integrated Care programme; this ensures that services, technologies and other solutions are fully incorporated and sustainable.

Liverpool's Mi (More Independent) is a highly innovative £17 million 'enabler' to integration in the city. This nationally and internationally recognised Department of Trade and Industry (DTI) initiative (often known as 'dallas' – 'delivering assisted living lifestyles at scale') enables us to collaborate with health, housing, independent sector organisations and technology industry over a 3 year period, developing cutting edge infrastructure and technology to improve selfcare and access to telehealth and telecare in Liverpool.

We are exploiting the vast innovation opportunities, new networks, partnerships and prospects Mi provides; for example, we have already succeeded in becoming a pathfinder site for the Department of Health's 3millionlives technology initiative.

Mi's aim is to change the face of health and care in Liverpool by shifting towards informed consumers of services, where people are connected and have the tools they need to take ownership of their own wellbeing; this focus on selfcare, independent living and use of **technology** directly enables our vision for integrated care.

Insight has been undertaken to understand people's attitudes towards **technology** assisted care; a key outcome has been the development of a bespoke segmentation model which is being overlaid with IC Insight, giving Liverpool a unique picture of what our population wants from **technologies** to enable independence, and how to tailor to this Citywide....

The overall activity of the Mi programme is too wide to describe here, but key areas of delivery are:

Technology Key industry partners Philips and Tunstall are working alongside Liverpool Community Health (LCH), Informatics Merseyside and LCC to shape the direction of new **technology** that meets the needs of users including an aspiration to roll out **telehealth** to over 1000 people identified through Integrated Care in Liverpool in the next 2 years.

Service Design and Integration Lead partners and service providers LCH, The Riverside Housing Group, HfT and Liverpool PSS, are working alongside LCC to understand how **technology** can support services to achieve better outcomes with efficiency gains. The existing **telecare** service delivered by Liverpool City council is being integrated into the Mi offer to individuals to ensure there is one system in the city to improve access to residents.

Community Development Mi is developing community based support to enable all to benefit from **technology** and introduce selfcare supported by the right tools.

Training Carers Working with National Museums Liverpool, providing community internet access across the city via the installation of hubs, developing the ehealth industry), increasing access to **technology** for carers through Local Solutions, community asset development and 'Active at 60' groups through LCVS.

<http://councillors.liverpool.gov.uk/documents/s132213/BCF%20Appendix%20One.pdf>

Luton

31 March

No telecare/telehealth references

<http://democracy.luton.gov.uk/cm5public/Meetings/tabid/70/ctl/ViewMeetingPublic/mid/397/Meeting/4598/Committee/1028/Default.aspx>

Manchester

January 2014

Integrated care teams are helping people discharge more safely and sustainably from hospital, linking to specialist services such as reablement and intermediate care to help people live more independently and reduce the risk of returning to hospital. Similarly, community falls teams, an urgent response service as an alternative to ambulance and A&E attendance, are in place using innovative community alarms and assistive **technology** to help people stay out of hospital....

....John is at work and self-managing his long-term conditions of Chronic Obstructive Pulmonary Disease and diabetes. He has a clear and owned care plan and has learnt how to use **technology** to enable him to manage his condition with knowledge. He has information about the new delivery model, and feels that, when he needs it, it is responsive to his needs with regular checks and care planning.

http://www.manchester.gov.uk/meetings/meeting/2055/health_and_wellbeing_board

Medway

2 April 2014

Community Equipment and Assistive Technology

Building on the overarching vision of promoting independence and prevention, a specific agreed priority area is the increased use of equipment and assistive technology. This will incorporate adaptations and greater utilisation of Telehealth and Telecare. There will be a review of the use and access to complex equipment required for areas such as effective pressure management to reduce pressure sores, preventing falls and speeding up hospital discharges. This review will be across health, housing and social care, ensuring that there is an effective interface across the sectors and ensure that we are getting best value from our contracts....

....Increase uptake of telecare/telehealthcare services....

LA / CCG Review existing contracts and use of assistive technology, including Telecare/Telehealthcare and other community equipment based services....

....Service users able to remain living at home for longer with suitable assistive technology to be able to self-manage their health and social care needs. Reduction in admissions to residential and nursing care

<http://democracy.medway.gov.uk/mgconvert2pdf.aspx?id=23431>

Merton

Seven day working in social care

This scheme will expand the capacity to arrange care packages in the evening and on weekends, and increase capacity to support discharge from acute hospitals. The service will also be restructured to match the three geographical localities of health (East Merton, West Merton and Raynes Park.) To facilitate this, there will be an expansion in the Mascot telecare system and the MILES reablement service (see Protecting and Modernising Social Care)....

....Occupational Therapists to implement reablement programmes and techniques and/or provide equipment, minor adaptations and Telecare prior to service packages and /or admissions to residential/nursing or hospital beds....

....Mobile Response Officer to provide back up and immediate installation of telecare monitoring system....

Telehealth/Telecare

This proposal will utilise telehealth for suitable patients with heart failure and/ or COPD with the overall aim of supporting these patients in their own home and being able to pick up early warning signs of a potential deterioration or exacerbation so that early intervention may avoid further deterioration and potential admission to hospital. This scheme will be provided as a part of the existing MASCOT services....

....Expected Outcome Metrics

All patients with agreed conditions identified as suitable are being managed proactively through telehealth arrangements to avoid unplanned inappropriate attendances/admissions to hospital....

....Initial procurement and roll-out of telehealth will take place during 2014/15, to include a pilot period....
Roll-out of telehealth will take place from April 2015....

....Key success factors

- Identification of provider of telehealth equipment

- Development of SLAs with telehealth provider

....A scheme is being prepared to expand the council's capacity to arrange care packages during the weekend (8am-5pm) and in the weekday evenings adding a care package from (5pm-8pm). This scheme is also expected to include greater responsiveness from the MASCOT Telecare service....

....Additional Resources required....Occupational Therapists to implement reablement programmes and techniques and/or provide equipment, minor adaptations and Telecare prior to service packages and /or admissions to residential/nursing or hospital beds....Additional carers to provide short term intensive home care and night sits Mobile Response Officer to provide back up and immediate installation of telecare monitoring system.

....Dependencies

A range of other health and social care services and provision will need to be available during the extended hours to enable social workers to effect safe and appropriate hospital discharge and prevention of hospital admission. These include....MASCOT (telecare provision for enhanced monitoring, safety and risk management)....

....Telecare and Telehealth

Outputs: Expansion in the Mascot telecare system and the MILES reablement service.

<http://democracy.merton.gov.uk/documents/s3679/Better%20Care%20Fund%20Plan%20-%20Plan.pdf>

Middlesbrough

No details available as at 28 April 2014

<http://democracy.middlesbrough.gov.uk/aksmiddlesbrough/users/public/admin/kab12.pl?cmte=HWB&meet=3&arc=71>

Milton Keynes

20 March 2014

Self-care and self-management of an individual's health will be encouraged and people will be supported to develop strategies for managing their health and independence, including access to a range of preventative, early intervention services to support people to pro-actively manage their health. Supporting services such as telehealth, telecare and community equipment will be strengthened to support independence....

....Development of Community equipment, telehealth and telecare to be utilised by the integrated health and social care teams above as a tool to help support people at home....

....Scheme 10 - Additional Telehealth – 2015/16 £500,000....

....Baseline information - Telecare / telehealth - number of people supported both community alarm and one or more additional sensor, as a proportion of all new community alarm users - year to date figure used. To be developed to show proportion of telehealth user.

<http://cmis.milton-keynes.gov.uk/CmisWebPublic/Binary.ashx?Document=42254>

Newcastle upon Tyne

11 March 2014

Facilitate data sharing and use of technology to engage patients and service users....

Fulfil data sharing obligations and introduce interoperable IT systems including secure web access for patient and telecare and telehealth functionality. This scheme includes actions to define and embed supportive information governance arrangements, and builds on existing partnership work on technologically enabled care through the DALLAS programme. It will be supported through the Active Age AZTECH programme, drawing on input from a group of international IT companies....

....The work stream has been focusing on three particular areas of development which include....Further development of primary and secondary prevention of ill health through interventions such as assistive technology and community development programmes that can safely support people at home. There will be greater focus on supporting frail people at home which will include development of the 'virtual ward' with access to Comprehensive Geriatric Assessment

<http://democracy.newcastle.gov.uk/documents/s68917/Item%205%20Better%20Care%20in%20Newcastle%20Appendix.pdf>

Newham

19 March 2014

The services being protected within the plans include....Telecare and technology interventions.

<https://mgov.newham.gov.uk/documents/s87645/FINAL%20HEALTH%20AND%20WELLBEING%20BOARD%20REPORT%20BCF%20with%20comments.pdf>

Norfolk

1 April 2014

Scope range of community self-care support services including tele-coaching/peer support....

....Scoping options for improved use of telecare and telehealth....

....Optimum use of technology and equipment

Technology and equipment will be used to very best effect to deliver the aims of our strategy, supporting the successful management of complex conditions at home, enabling revised mix of staffing skills and to facilitate swift discharge. Our assumption will be that for an individual with complex care needs there is a beneficial technology to be applied....

....Housing support –The existing partnership work between health (including public health), housing and social care aligned to our Healthy Norwich initiative will be built on to ensure that people are well supported to live independently at home. This includes further development and improvement of a wide range of support including supported housing, disability adaptations, community equipment services, assistive technology and the work of Home Improvement Agencies.

<file:///C:/Users/New%20Dell/Downloads/healthwell010414agendapdf.pdf>

North East Lincolnshire

Unable to locate current position as at 28 April 2014

<http://www.nelincs.gov.uk/meetings/committee/107>

North Lincolnshire

14 February 2014

April 2014 KTN/ALIP/Telecare LIN Newsletter Supplement

Page 26 of 44

Undertake a review of the use of **Telecare** to support targeted provision to enable self-management, improve people's experience and access, support people to remain competent and confident and focus on individuals in greatest need.

<http://webarchive.northlincs.gov.uk/councilanddemocracy/committees/health-and-wellbeing-board/health-and-wellbeing-board-agendas-and-reports/health-and-wellbeing-board-special-meeting-14-february-2014/>

North Somerset

Unable to locate current position as at 28 April 2014

North Tyneside

18 March 2014

2015/16 - Increased use of **telehealth** & **telecare** - £ 486,578....

....Further social care interventions

A range of initiatives to strengthen the ability of social care to keep people well at home have been identified by North Tyneside Council. They areincreased use of **telehealth**....

....Developing the range of assistive **technology** available and reducing the times for assessment and provision....

....In order to support a shift to more proactive care, implement **telehealth** across primary care, focusing on COPD and hypertension....

....In addition we are exploring the scope for additional support to social care, including.... increased use of **telehealth**.

http://www.northtyneside.gov.uk/pls/portal/NTC_PSCM.PSCM_Web.download?p_ID=551885

North Yorkshire

1 April 2014

Increasing the reach of assistive **technologies** to support people at home and in care homes....

....The second largest proportion of funding is for prevention services and this is anticipated to have a longer period before the impact is felt. We can evidence that we are placing initial resources in services which deal with the immediate and pressing challenges of increased demand and balancing this with the need to invest in ways which prevent or delay people needing formal services. This includes Social Prescribing, Care Navigators, Falls Prevention, Carers Services, and Assistive **Technology**....

....Increase in take up of housing related solutions and assistive **technology**....

....Promoting independence by improving reablement, integration with the NHS, extending the use of Assistive **Technology** and improving equipment services;

<http://democracy.northyorks.gov.uk/committees.aspx?commid=27&meetid=2286>

Northamptonshire

12 February 2014

No Telecare/telehealth references – at 28 April 2014

<https://cmis.northamptonshire.gov.uk/cm5live/MeetingsCalendar/tabid/73/ctl/ViewMeetingPublic/mid/410/Meeting/2334/Committee/437/Default.aspx>

Northumberland

12 February 2014

Importance of high touch, personalised care supported by **technology**, especially telemedicine - enabling a sharing of information....

....Preventative services

These are services which are intended to reduce long-term demand on both health and social care services. They include "telecare" alarm and monitoring systems, and grant aid to voluntary and community sector organisations providing preventative services.

<http://committees.northumberland.gov.uk/aksnorthumberland/images/att17385.pdf>

Nottingham

26 March 2014

The additive elements of the Nottingham BCF are as follows....Development of the **Telehealth** programme

....Contractual requirements....

....Assistive **technology**: A new **telehealth** service will have been procured and be operational. **Telecare** expansion to targeted groups will be in place.

<http://committee.nottinghamcity.gov.uk/documents/s3191/3.BETTERCAREFUND.pdf>

Nottinghamshire

2 April 2014

Transforming Patient Satisfaction

These schemes focus on the range of services available to patients and service users, either utilising these services directly or to focus on the needs of carers. By developing a range of support either directly to people, or through a range of assistive **technologies**, training programmes to provider services or carers. These projects will enhance and develop the 3rd sector and a range of options for promoting self-care or alternative and innovative solutions to decrease dependency upon direct access to the acute sector or primary health and social care services.

....The success factors are....Increase in use of Assistive **technology** units.

<http://bit.ly/SOKbtF>

Oldham

7 February 2014

No references to TC/TH as at 28 April 2014

<http://committees.oldham.gov.uk/documents/s43214/Better%20Care%20Fund%20Submission%20Part%201%20-%20Oldham%20-%20Draft%20v2.docx.pdf>

Oxfordshire

3 February 2014

Equipment and assistive **technology**

As with family carers, there is extensive evidence that the use of equipment and assistive **technology** is an effective way to support independence and allow people to live at home for longer. We will continue to invest in this as an alternative to residential and domiciliary care provided by care workers where suitable....

....There is also evidence that this can help reduce admissions and represent savings in the wider system. A recent review showed that over 30% of calls to the emergency services for clients of the Alert Service in Oxfordshire (a countywide service providing **telecare** alarm equipment to vulnerable and older adults) were handled by a mobile responder rather than needing to refer for an ambulance. This equates to a saving of over £300k per year, plus avoiding further costs for the NHS had the users been admitted to hospital....

We are therefore proposing the Fund is used to invest in the following areas....Equipment and assistive **technology**

<http://mycouncil.oxfordshire.gov.uk/documents/s24335/Better%20Care%20Fund%20Update.pdf>

Peterborough

27 March 2014

Home adaptations, **telehealth** and **telecare**: better development and utilisation of emerging and existing **technologies** to support independence, and reduce demand on acute / long term care sectors. We will invest in areas for which assistive **technologies** are proven (e.g. for people with chronic heart-failure, COPD / asthma) with a view to maintaining independence, and reducing unnecessary hospital admissions.

<http://democracy.peterborough.gov.uk/documents/s19648/8a.%20Better%20Care%20Action%20Plan%20Report.pdf>

Plymouth

10 April 2014

The following developments are planned for 2015/16.... **Telecare** and **Telehealth** will be part of the mainstream assessment process and offered where the need is identified...

....a strengthened social care offer based around the following priorities is required....Promotion of assistive **technology** (**Telecare** and **Telehealth**).

<http://www.plymouth.gov.uk/mgInternet/documents/s53797/Plymouth%20BCF%20-%20Part%201%20-%20ver6%20210314.pdf>

Poole

See Bournemouth entry

Responding to need – the ‘front-end’ of support such as easy to access points of contact, improved information and advice, reablement/ intermediate care, **technology**, accessible homes (via district councils).

<http://www.bournemouth.gov.uk/CouncilDemocracy/Councillors/CouncillorCommitteeMeeting/BournemouthPooleHealthWellbeingBoard/2014/02/05/Reports/Better-Care-Fund-and-Better-Together-Draft-Business-Case---Appendix-B--2-.pdf>

Portsmouth

26 February 2014

No details as at 28 April 2014

<http://democracy.portsmouth.gov.uk/ieListDocuments.aspx?Cid=150&Mid=2445&Ver=4>

Reading

14 February 2014

Alongside extending practice hours, there are a number of technological initiatives we wish to deliver, for example, e-consults and/or Skype consultations, alongside an expansion of the range of services on offer at the weekend to include, for example, ultrasound or health screening programmes.

<http://www.reading.gov.uk/meetings/details/3659/>

Redbridge

Feb 2014

We want more people to....Use **telecare**, **telehealth** and other assistive **technology**....

....Other supporting strategies - **Telecare** strategy, Carers strategy.

<http://moderngov.redbridge.gov.uk/documents/s89541/BCF%20Template%20V%2013%200.pdf>

Redcar and Cleveland

Unable to locate plan details as at 28 April 2014

<http://bit.ly/1h5ZGpy>

Richmond

13 March 2014

By increasing the uptake of **telecare** solutions and developing and rolling out other assistive **technology** interventions in Richmond we can ensure that people use these systems to self-manage long-term conditions and get emergency attention 7 days a week. Our careline service operates 365 days a year and 24 hours a day and contacts a key person to check up on vulnerable adults in most instances rather than having ambulance services as a first port of call in an emergency. By increasing the number of elderly frail with a **telecare** alarm we can avoid more unnecessary hospital admissions.

<https://cabnet.richmond.gov.uk/documents/s49354/HWB%20BCF%20paper%20Appendix%201.pdf>

Rochdale

14 February 2014

We also have an integrated Falls Service which responds on a prevention basis as well as reacting to people who have already experienced falls. We intend to expand this as part of new locality teams. This is an important part of prevention, along with extended **Telecare**, Telehealth and medicine management support....

....We will have an integrated health and adult social care response out of normal weekday hours and at weekends — this is already in development. We will also ensure carer support is available 24/7 through this new way of working, and through further extension of **Telecare** and Careline Services....

....Increased use of **Telecare** and Telehealth focused on specific patient groups, year on year....

....Deliver plan for **Telecare** and Telehealth services to further extend access, led jointly by RMBC and Pennine Community NHS Trust - Jul 2014....

....Alongside this the strong focus on Reablement and **Telecare** will remain, as we know that this is delivering results and is critical to the whole system.

<http://democracy.rochdale.gov.uk/documents/s23727/Rochdale%20MBC%20Heywood%20Middleton%20Rochdale%20CCG%20Better%20Care%20Fund%20Plan%20Part%201.pdf>

Rotherham

23 April 2014

BCF03 Joint call centre Incorporating **telecare** and **telehealth**....

....This workstream provides a joint vision for the development of **telehealth** and **telecare** services in Rotherham. It sets out the principles for care pathway development, maps current **telecare** provision and puts forward proposals for joint commissioning activity.

The overall objective of developing a joint **telecare/telehealth** strategy is to optimise the care of patients with long term conditions. Rotherham MBC and Rotherham CCG recognise that **technology** is an enabler for optimisation but not the whole solution. Pathways should be developed in conjunction with national guidelines and strategies for the management of long term conditions. All pathways should be systematically reviewed with clinicians in order to draw on their local expertise.

....Rotherham CCG and Rotherham MBC will work together to develop **telecare** prescriptions for GP Practices participating in the case management programme. We will introduce integrated **telecare** and **telehealth** packages which can be offered as part of a self-management programme for patients with a long term condition. We will scope the potential for development of a joint **telecare/telehealth** hub. Specifically we examine the potential for combining the Rothercare Service with the Care Coordination Centre....

....The main benefit of this initiative is its potential to deliver improvement in outcomes for people who have a high dependency on health and social care services. A combined approach to care coordination, **telehealth** and **telecare** allows local practitioners to maintain contact with vulnerable patients. It can help improve the reach of health and social care, supporting those who are often 'invisible' from main acute services....

....This initiative is more likely to ensure that intervention is early and appropriate. It makes more efficient and effective use of available clinical teams by reducing unnecessary home visits. It involves people far more in the management of their own healthcare and could lead to significant reductions in A&E usage and unplanned admissions....

Key to the delivery of integrated person centred services, in the context of reduced revenue and increased demand for health and social care services, is a core offer of social care services including....Preventive services such as telecare/assistive technology, reablement, intermediate care – all designed to support independence

<http://moderngov.rotherham.gov.uk/documents/s92718/Rotherham%20Better%20Care%20Fund%20Plan.pdf>

Rutland

10 April 2014

Develop the expansion of telehealth and telecare (remote access to healthcare support and equipment to assist people to remain in their homes for longer such as key safes to enable carers to visit people who cannot get to their front doors easily)...

...Expand telehealth and telecare – plan for an integrated approach to telecare and telehealth provision to be in place.

RCC BCF 04 – 2015/16 - Telehealth & Telecare - £98k

<http://www.rutland.gov.uk/pdf/Report%20No.%2082-2014%20Better%20Care%20Fund%20Appendix%20B%20-%20planning%20template%20part1.pdf>

Salford

Currently unable to view documents at 28 April 2014

<http://bit.ly/1h62L8U>

Sandwell

31 March 2014

Embracing new technology such as telehealth and telecare are fundamental to the success of this scheme alongside a radical redesign of existing pathways and supporting carers to ensure as many people as possible are managed outside the traditional health and social care system, their needs being met via the community. The role of Housing being integrated within the prevention platform will ensure that the range of needs can be met within a single point of access....

...The intended outcomes from this scheme are....Increase in use of telecare....

...There has been further investment in Reablement Services (STAR Team) to support people to regain their level of functioning to remain within or return to their own home. This is alongside investment in Telecare Technology to maximise individuals' independence within their own home. We have also developed additional Extra Care Housing as an alternative to residential care.

The funding of £8.4 million currently allocated for social care with a health benefit through the section 256 transfer has been used by the council to invest in services such as reablement, telecare and home support. This level of investment will need to be sustained and potentially increased, in order to maintain this service level and to deliver 7 day services and meet the additional requirements of the Care and Support Bill.

<http://bit.ly/1h63gay>

Sefton

19 February 2014

We recognise the significant challenge this poses, and in 2014/15 we will develop a change programme to deliver, in a 5 to 10 year period, changed patterns of services which will see:

- Increased use of appropriate home **technology**, tele-health and **telecare**
- Participation of people in applied research studies, particularly in primary care and related to the acceptability of **technology**....

....The new delivery will see roles and responsibilities change significantly in both the Council and the provider. The size of this change cannot be underestimated as it is dependent on whole system change including assessment and review and health processes, the use of assistive **technology**, **telehealth**, system development, plus significant cultural change....

...Transforming adult social care — including increasing the use of assistive **technology**, developing a new model of reablement and scaling this up, increasing personal and community resilience and commissioning services and support that 'do with' people rather than 'do for' people.

<http://modgov.sefton.gov.uk/moderngov/ieListDocuments.aspx?Cid=712&Mid=7665&Ver=4>

Sheffield

27 March 2014

We will help more people to help themselves by offering professional support, physical therapies, and more innovative equipment and **technology**.

<http://sheffielddemocracy.moderngov.co.uk/documents/s12745/Appendix%20a%20-%20Sheffield%20City%20Council%20Health%20and%20Wellbeing%20Budget%20Plans%202014-15.pdf>
<http://sheffielddemocracy.moderngov.co.uk/mgAi.aspx?ID=7991#mgDocuments>

Shropshire

28 March 2014

Those services identified for inclusion in the Fund in 2014/15 are identified as follows - Living Independently for Longer - **Telecare**

The council is committed to delivering on its statutory responsibilities, which will change and grow as the Care and Support Bill is implemented and this may require changes to local policy, guidance and operating models. It has recognised the importance of a range of prevention and early intervention approaches including **telecare**, community equipment and reablement in keeping people independent.

<https://shropshire.gov.uk/committee-services/documents/s2023/6%20HWBB%20BCF%20plan%20phase%20%20submission%20V6%202.pdf>

Slough

26 March 2014

The Better Care Fund will focus on the following interventions....**Telecare** and **telehealth** solutions to promote independence

....Projects under this programme are....**Telehealth** and **telecare**

<http://www.slough.gov.uk/moderngov/documents/s33225/Appendix%201%20-%20BCF%20Delivery%20Plan%20template.pdf>

Solihull

1 April 2014

Development of **Telecare** / **Telehealth** Service - To introduce relevant **technologies** to a number of health and social care pathways to improve outcomes for customers and carers....

....Pilot **telehealth** within Community Health Services June 2014 – January 2015....

....Develop **telehealth** model for roll out to Community Health Services March 2015.

<http://eservices.solihull.gov.uk/mgInternet/documents/s5812/bcf-pln-temp1%20draft%20v16%202.pdf>

Somerset

27 March 2014

We intend to undertake a full review of the use of **technology** to support primary and secondary prevention, enable self-management, improve customer experience and access, and free up professional resources to focus on individuals in greatest need. Specific examples would include **telecare** and **telehealth** to build confidence in individuals which results in decreased demand for social, primary and community care. Somerset has over 500 people actively managing their health conditions by **telehealth** and our ambition is to significantly increase this number over the next year.

<http://www1.somerset.gov.uk/council/board39/March%202014/2014%20March%2027%20Item%205%20Appendix%20A.pdf>

South Gloucestershire

27 March 2014

Telecare/Telehealth

The promotion of the use of telecare/telehealth where there is evidence that this can support the delivery of a safe, quality and cost effective solution to meeting someone's needs. In particular, the remote monitoring of a person's condition will help to promote self-management and reduce the reliance on regular home visits or travel to a clinic thereby improving the overall experience for the individual and making the best use of resources.

<http://council.southglos.gov.uk/documents/s45703/Better%20Care%20Fund%20Plan%20Appendix%20A.pdf>

South Tyneside

26 March 2014

Telecare/Telehealth: To continue to provide a rapid response service	202,678 (52131016)	No of telecare clients: 31.3.12 = 414 To date = 513	£120,000 Continuation of 12/13 and £32,678 Capacity to develop Telehealth	

<http://www.southtyneside.info/applications/2/councillorsandcommittees/committeemeeting.aspx?committeeid=835&meetingid=3148&periodid=26>

Southampton

29 January 2014

Our vision is based on what people have told us is important to them. Through the above consultation and engagement routes, we know what people want is more choice and control, good quality services and for their care to be planned with them and their families/carers and coordinated by a key worker or case coordinator to simplify communication and provide consistency. They tell us that good information and advice along with good communication are key. They want us to make better use of IT and technologies such as telecare/telehealth as well as computer and mobile phone support. The people we talked to also highlighted the important role of the voluntary sector and the need to make staff in statutory services more aware of what is out there in the community. One key point that came out of several consultations was how much people value NHS services and the principles of the NHS constitution and so we are mindful of the need to ensure we protect and build on what is good....

....Strategic Context for Telecare and Telehealth in Southampton 2013 - Sets out our vision, aims and key principles for developing telecare and telehealth in Southampton and the model we propose to adopt. A business case is in development....

....Redesign of an integrated health and social care rehabilitation/reablement service for the city bringing together the following individually managed services....Telecare and telehealth....

For patients and service users, the changes we are making will mean....They will have better access to information and resources such as telecare/telehealth that help them manage their own condition at home....

....Use of new technologies is maximised -Increased use of telecare/telehealth....

....We will use the Better Care Fund for....Redesign of an integrated health and social care rehabilitation/reablement service bringing together City Care First Support, Brownhill House, RSH wards, Health and social care telehealth, Joint Rapid Response admission avoidance/discharge support service....

....Review telecare and telehealth services in the City, re local people are more aware of the ways in which they can use technology to retain their independence....

....maximise independence through improved re-ablement and access to telecare/telehealth services, to help people regain their independence and reduce the need for ongoing care.

<http://www.southampton.gov.uk/moderngov/ieListDocuments.aspx?CId=543&MId=2689&Ver=4>

Southend-on-Sea

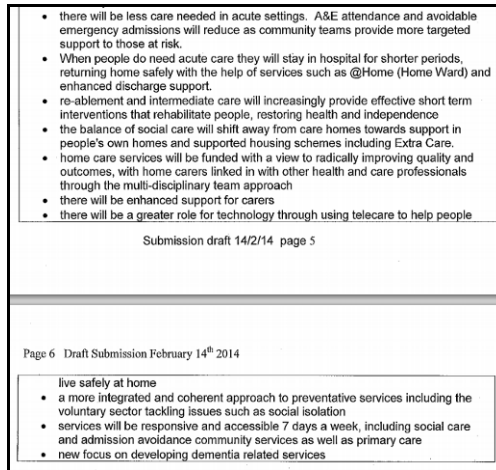
26 March 2014

No telecare/telehealth references as at 28 April 2014

<http://minutes.southend.gov.uk/akssouthend/images/att24201.docx>

Southwark

24 March 2014



<http://moderngov.southwark.gov.uk/documents/s45289/Appendix%202.2a%20Better%20Care%20Fund%20-%20draft%20submission.pdf>

St Helens

20 March 2014

Continued and increased investment in **Telecare** to support health wellbeing and safety and also develop links with **Telehealth** opportunities. Other social care services for vulnerable adults with health and social care needs to continue to support a range of other smaller scale social care services which have an impact on health including Day Services, Challenging Behaviour Services, Sensory Impairment Services etc.

<http://moderngov.sthelens.gov.uk/documents/s33047/V8%20DRAFT%20Better%20Care%20Fund%20planning%20template%20part%201%20-%20206.3.14%20pre%20final%20submission.pdf>

Staffordshire

13 February 2014

John is able to increase his ability to care for himself, and his GP is going to provide him with **telehealth** services, which monitor John's diabetes and send the details straight to his GP. This reduces the need for John to travel to visit his GP and increases his sense of being in control of his disease. John's GP surgery coordinates all his care needs and he has a single care record using his NHS number to make sure he only has to tell his story once....

....A county-wide approach to **telecare** has just been launched as part of the BCF plan and this is expected to deliver savings to the NHS which will be quantified as part of the early stages of this work.

<http://moderngov.staffordshire.gov.uk/documents/s46657/Staffordshire%20BCF%20Appendix%20A%20v.9.8.pdf>

Stockport

15 January 2014

We anticipate this will deliver from a system perspective (still to be quantified and agreed)....Increased use of telemedicine for individuals with heart failure....A reduction in non-elective admissions for people as a result of telemedicine.

<http://democracy.stockport.gov.uk/documents/s35952/Better%20Care%20Fund%20Stockport%20planning%20template.pdf>

Stockton-on-Tees

26 March 2014

So what do we mean by 'go much further'? We would look at all of the current initiatives and identify the best way to ensure there is the appropriate level of integration with Social Care. It would include a suite of interventions e.g. OT, community nursing, social care, aids and adaptations, digital care (such as **Telecare**). It would also facilitate community and voluntary sector support and services in the community from a Social Care perspective. In addition to working with the community and voluntary sector it is important to work with private sector providers for example nursing and care homes to ensure that the care provided is consistent with the outcomes and ambitions of the Better Care Fund.

<http://www.egenda.stockton.gov.uk/aksstockton/users/public/admin/kab14.pl?operation=SUBMIT&meet=24&cmte=NHW&grpId=public&arc=71>

Stoke-on-Trent

13 March 2014

Stoke recognises the importance of prevention and early intervention; the aim being to support people at the earliest opportunity to ensure that they remain well, are engaged in the management of their own wellbeing, and wherever possible enabled to stay within their own homes. The provision of services such as community equipment, Extra Care housing, **telecare** and reablement are important services which help to achieve this aim. However, due to the additional requirements within the Care Bill and the need to prioritise our statutory responsibilities, Stoke may only be able to offer these interventions to people with eligible needs....

...Initially the BCF will focus on the following....Support to live at home – Assistive **technology**, digital health, major housing adaptations (DFGs), community equipment, Extra Care Housing, etc....

....Assistive **technology**/digital health

Stoke-on-Trent has a proven track record in developing ground-breaking technological innovations and complementary service approaches to make the most of the support and stability that can be gained from astute use of assistive **technology** solutions. This will continue to be prioritised, and embedded in the strategic thinking that underpins the work of the Better Care Fund.

<http://www.moderngov.stoke.gov.uk/mgconvert2pdf.aspx?id=60303>

Suffolk

7 February 2014

No Telecare/telehealth references as at 28 April 2014

<http://committeeminutes.suffolkcc.gov.uk/meeting.aspx?d=07/Feb/2014&c=Suffolk%20Health%20and%20Wellbeing%20Board>

Sunderland

Unable to locate details as at 28 April 2014

<http://bit.ly/1j7ha96>

Surrey

3 April 2014

The local joint commissioning work programmes will deliver this by, for example....Establishing an integrated discharge network/model across services including rapid response, occupational therapy, reablement, **telecare**, home from hospital, equipment, transport etc....

Social care services will be protected.... Establishing an integrated discharge network/model across services including rapid response, occupational therapy, reablement, **telecare**, home from hospital, equipment, transport etc....

...Use new **technologies** to give people more control of their care....

...Key enablers - Optimisation of new/existing **technologies** to give people more control of their care

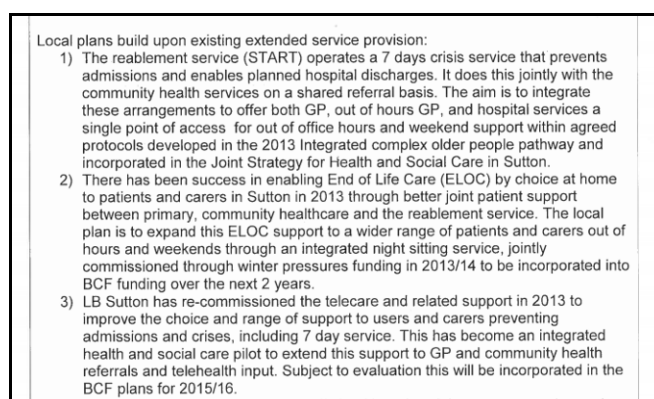
<http://mycouncil.surreycc.gov.uk/documents/s12977/Annex%20%20-%20Better%20Care%20Fund%20Template%20Part%201.pdf>

Sutton

March 2014

BCF 09 Integrated Community Equipment Service (ICES): The ICES pooled budget is used to deliver equipment through the Croydon Procurement Hub to meet health and social care needs. Currently the budget is £750k, but remains under pressure so may need to be increased. The advantage of inclusion in the BCF would be that it helps integrate the assessments, access and delivery of equipment, adaptations (in BCF 08), and assisted **technology** (**telecare**) together with joint assessments of health and social care needs in BCF 01. Sutton would then experience efficient, holistic assessments and access to a wider range of supports to promote their independence.

http://sutton.moderngov.co.uk/documents/s31380/Appendix%20%20BCF_schemes_detailed_description%20Final.pdf



<http://sutton.moderngov.co.uk/documents/s31384/Appendix%20%20BCF%20Planning.pdf>

Swindon

12 March 2014

Telehealth and remote monitoring as appropriate and need locally determined....

....Capital allocations fund the joint Integrated Community equipment Store for children and adult services as well as investment in tele health and telecare. We will continue investment in technology to support self-care and prevention and enable for this a disability to live an independent as possible....

....Capital allocations

Capital allocations fund the joint Integrated Community equipment Store for children and adult services as well as investment in telehealth and telecare. We will continue investment in technology to support self-care and prevention and enable for this a disability to live an independent as possible....

....Home will mean a your own or family home, kept as your home, with us using new practice and technology that maintains the home environment.

<https://ww5.swindon.gov.uk/moderngov/documents/s65496/Better%20Care%20Fund%20Plan%20Appendix%201a.pdf>

Tameside

16 January 2014

Unable to find details as at 28 April 2014

<http://www.tameside.gov.uk/healthandwellbeingboard/16jan14/agenda>

Telford and Wrekin

12 February 2014

Current expenditure on re-enablement and prevention through the s256 agreement provides resources for Community Equipment and adaptations Telecare....

....Care of long term and other conditions will increasingly be based on a shift of responsibility from professional to citizen. The ideas of self-care and expert patient are not new, and as personal health budgets and appropriate assistive technology emerge we will explore opportunities to take the principles of self-care to the next stage.

<http://apps.telford.gov.uk/demservice/DisplayDocument.asp?type=pdf&ref=16124>

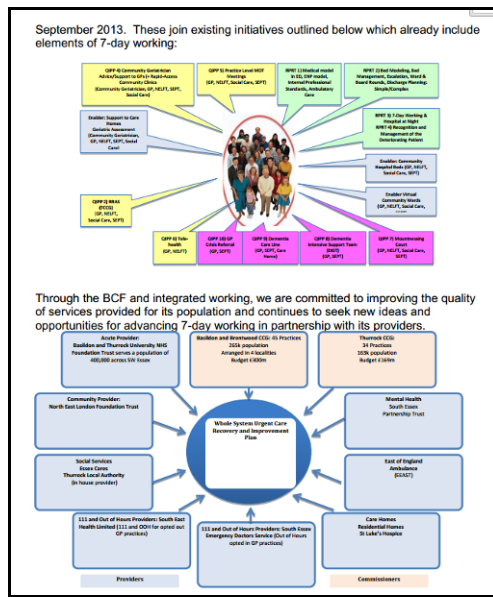
Thurrock

13 March 2014

Technological solutions

Telecare is now embedded in all joint assessments to support service users to remain independent. Over the past year Telecare usage has increased - with an average of 18 installations each month, and is included in 39.9% of all council funded social care packages. Over the next year, Telecare will be expanded with a wider range of equipment to support the changing needs of Thurrock's population, including projects such as the digital befriending service currently being piloted – for example Age UK is using Skype and TVHD webcams to combat social isolation by connecting families and friends by video conferencing....

....Telehealth - Continuation of current telehealth service. Evaluation and future service development - £30k



[p://bit.ly/1fPiUHF](http://bit.ly/1fPiUHF)

Torbay

12 February 2014

As part of this collaborative approach we will be seeking to optimise the current workforce capacity by continuing our pursuit of **technology** based solutions that complement traditional face to face consultations, so that not only is access extended in terms of timings but also in terms of styles.

<http://www.torbay.gov.uk/DemocraticServices/documents/s17635/Better%20Care%20Fund%20and%20Strategic%20Plan%20Appendix%201.pdf>

Tower Hamlets

24 March 2014

Assistive **Technology**

The Local Authority has an established Assistive **Technology** (AT) project that was set up to implement a new approach to supporting people with **Telecare**/AT. Instead of AT being aimed mostly at people with low to medium level needs, it is now also offered to people with higher level needs, especially those with long term health conditions. People with dementia and patients on community virtual wards (CVWs) are of particular interest to the new provision. The variety of devices has been increased to cater for a wider range of people's circumstances and health conditions. Training has been provided to potential prescribers of AT, to make them familiar with the application of AT devices and solutions and to ensure they are aware of risks and ethical issues. The process for providing AT includes appropriate approvals for prescriptions as well as points at which reviews are done to check the suitability of prescribed devices. The current AT project is supported through existing S256 monies and the success of the existing AT projects will be developed on through the BCF. This will be achieved through linking the work with ongoing work streams of the Health and Wellbeing Strategy.

<http://moderngov.towerhamlets.gov.uk/documents/s55388/BCF%20Appendix%201.pdf>

Trafford

No detailed information of plan as at 28 April 2014

<https://democratic.trafford.gov.uk/ieListMeetings.aspx?Cid=260&Year=0>

Wakefield

13 February 2014

No Telecare/telehealth references as at 28 April 2014

<http://mg.wakefield.gov.uk/documents/s56206/Better%20Care%20Fund%20planning%20template%20part%201%20final%20draft%2010%2002%2014.pdf>

Walsall

No details available as at 28 April 2014.

<http://www2.walsall.gov.uk/CMISWebPublic/Meeting.aspx?meetingID=2054>

Waltham Forest

25 March 2014

No details available as at 28 April 2014.

<http://democracy.walthamforest.gov.uk/documents/s39280/001%20Better%20Care%20Funding%20HWB%20report%20v9%200%20210319%20FINAL.pdf>

Wandsworth

11 February 2014

Limited plan details - no Telecare/Telehealth references as at 28 April 2014

<http://ww3.wandsworth.gov.uk/moderngov/ieListDocuments.aspx?Cid=508&Mid=4243&Ver=4>

Warrington

No details available as at 28 April 2014.

http://cmis.warrington.gov.uk/cm5/Committees/CURRENTCOMMITTEES/20132014/tabid/132/ctl/ViewCMIS_CommitteeDetails/mid/616/id/1272/Default.aspx

Warwickshire

11 February 2014

We will develop a joint assessment and care planning process building on the trusted assessor model and using **technology** in its wider capabilities....

....It will require investment in **technology** enabling people to identify and manage their own care or the care of those close to them. It will mean a different mind set to the potential of **technology** not just in the way we process our business but also in the way we deliver services....

....This means working with a belief that assisting older people within their communities is an important part of the task and that providers of this service can demonstrate person centred approaches that deliver the outcomes defined by customers. It means commissioning an outcomes based model for care at home that is predicated on the ability of older people to recover (albeit it different rates). It would have an emphasis of capturing community support, would utilise equipment and assistive **technology** and would expect access to housing grants and home improvements to align with discharge from hospital....

....Through the use of **technology** and access to equipment there would be an expectation that people would be able to return home much more quickly and not be diverted into residential and/or nursing care as the only option.

<http://bit.ly/1h6EkZ3>

West Berkshire

27 March 2014

<http://decisionmaking.westberks.gov.uk/documents/s31497/Item%209%20-%20Appendix%20A.pdf>

West Sussex

30 January 2014

No details available as at 28 April 2014.

<http://www2.westsussex.gov.uk/ds/cttee/hwb/hwb300114age.pdf>

Westminster

March 2014

Tri-borough Plan

See Hammersmith and Fulham

http://transact.westminster.gov.uk/committee/index.cfm?c_docs=Health_and_Wellbeing_Board/2014/Better%20Care%20Fund%20Plan

Wigan

No details available as at 28 April 2014.

<http://democracy.wigan.gov.uk/ieListMeetings.aspx?Cid=488&Year=0&a=1>

Wiltshire

20 March 2014

A commissioning plan for intermediate care incorporating.... **telehealth** services....

....Concentrating on getting the right support to people when they need it - £3.39m in 2014-15 £6.89m in 2015-16 (this includes existing investment in single point of access, rapid response and **telecare** response)....

...From the Better Care Fund, £9.18m is set aside in 2014-15 and 2015-16 to maintain services for vulnerable people based on current eligibility criteria, including funding to cover demographic growth. This will fund a range of services, including... **Telecare** response services.

<https://cms.wiltshire.gov.uk/documents/s71045/Better%20Care%20Plan%20report.pdf>

Windsor and Maidenhead

12 March 2014

This means local NHS teams will have a multidisciplinary team approach with a GP, Consultant Geriatrician and Social Care working combining expertise to provide more immediate and personalised services to help individuals stay in their own homes. This could involve by example, ensuring access to **telecare**, prevention advice on reducing falls in your own home and a nurse input to manage a long term condition such as diabetes....

...Good progress has been made in the development of our integrated primary care teams and a review is to be undertaken by the Kings Fund imminently to identify how these teams and case management should develop further to support a wider cohort of patients. Patients receiving this approach will be supported by **telehealth** and **telecare** where it can benefit them....

...Supporting people with long term conditions - Kings Funds review and further development of Integrated Primary Care Teams, with general practice at the centre....Implementation of **telehealth** and **telecare** to support those with COPD and heart failure....

...Increase the number of people accessing **telecare** / **telehealth** (theme 2.1)

How will the target be achieved?

The target will be achieved by enhancing the successful provision of and additional investment in community based services such as homecare and **telecare**, that enable people to live more independently for longer. A new approach to providing homecare through Outcome Based Commissioning will give a greater reablement focus to ongoing care packages as well as being the eyes and ears of health services. We are investing more in Community Equipment across Health and Social Care with a focus on responsible prescribing. Building on the successful **Telecare** programme this will be enhanced by **Telehealth** provision jointly commissioned with the CCG. We are focused on using beds as interim provision where necessary to allow short stays that are focused on reablement.

[http://www.rbwm.gov.uk/minsys3.nsf/d9c360870262e3708025765d004cf06a/56d39e4081c5ce7e80257c9a004bc07b/\\$FILE/Agreement%20on%20Better%20Care%20Fund%20between%20Health%20and%20Social%20Care.pdf](http://www.rbwm.gov.uk/minsys3.nsf/d9c360870262e3708025765d004cf06a/56d39e4081c5ce7e80257c9a004bc07b/$FILE/Agreement%20on%20Better%20Care%20Fund%20between%20Health%20and%20Social%20Care.pdf)

Wirral

13 February 2014

We will continue to develop and improve the following schemes as examples.... Assistive **technology** / **telehealth**....

...We already have a programme of work which is working towards....Developing more effective community interventions such as falls response and prevention services, assistive **technology**, community equipment, appropriate mental health and dementia interventions.

<http://democracy.wirral.gov.uk/documents/s50016558/BCF%20submission%20130214%20App2.pdf>

Wokingham

13 February 2014

Self-care can benefit people from making basic daily lifestyle choices through to people with long term chronic and complex conditions. Supporting people to self care requires better information, support to help with care co-ordination and planning, making best use of new **technologies** and assistive **technology**....

....Working towards these outcomes requires focus and planning to achieve the following....Making better use of **technology**.

<file:///C:/Users/New%20Dell/Downloads/Item%2065.00%20Better%20Care%20Fund%20Plan.PDF>

Wolverhampton

Telecare/Community Equipment & Adaptations – 2014/15 £900k and 2015/16: £900k

<http://bit.ly/1mRh4FC>

Worcestershire

No details available as at 28 April 2014.

<https://public.worcestershire.gov.uk/web/home/DS/Documents/Appendix/Health%20and%20Well-being%20Board/Agendas%20and%20Reports%202014/Tuesday%2C%2011%20February%202014/item%207%20Better%20Care%20Fund%20Apx%20B.pdf>

York

2 April 2014

No telecare/telehealth references as at 28 April 2014

<http://democracy.york.gov.uk/documents/s88516/BCF%20Master%20submission%20v25.pdf>

Newsletter supplement prepared by Mike Clark (@clarkmike) and brought to you by the Telecare LIN on behalf of the HealthTech KTN and Technology Strategy Board. Newsletters and supplements are archived at www.telecarelin.org.uk. Disclaimer: "We provide this newsletter supplement for information purposes only and neither the Technology Strategy Board nor the authors accept any liability whatsoever for inaccuracies, errors or omissions therein or for any consequences arising therefrom."

www.alip-healthktn.org

Technology Strategy Board
Driving Innovation