



NEWSLETTER SUPPLEMENT February 2013

Welcome to the February 2013 newsletter supplement from the Technology Strategy Board (TSB) Knowledge Transfer Network and the Telecare Learning and Improvement Network (LIN).

This Newsletter supplement provides useful references to the NHS reforms that apply in England from 1 April 2013.

A series of slides shows the transition from mid-2010 through to April 2013 and covers the new structures.

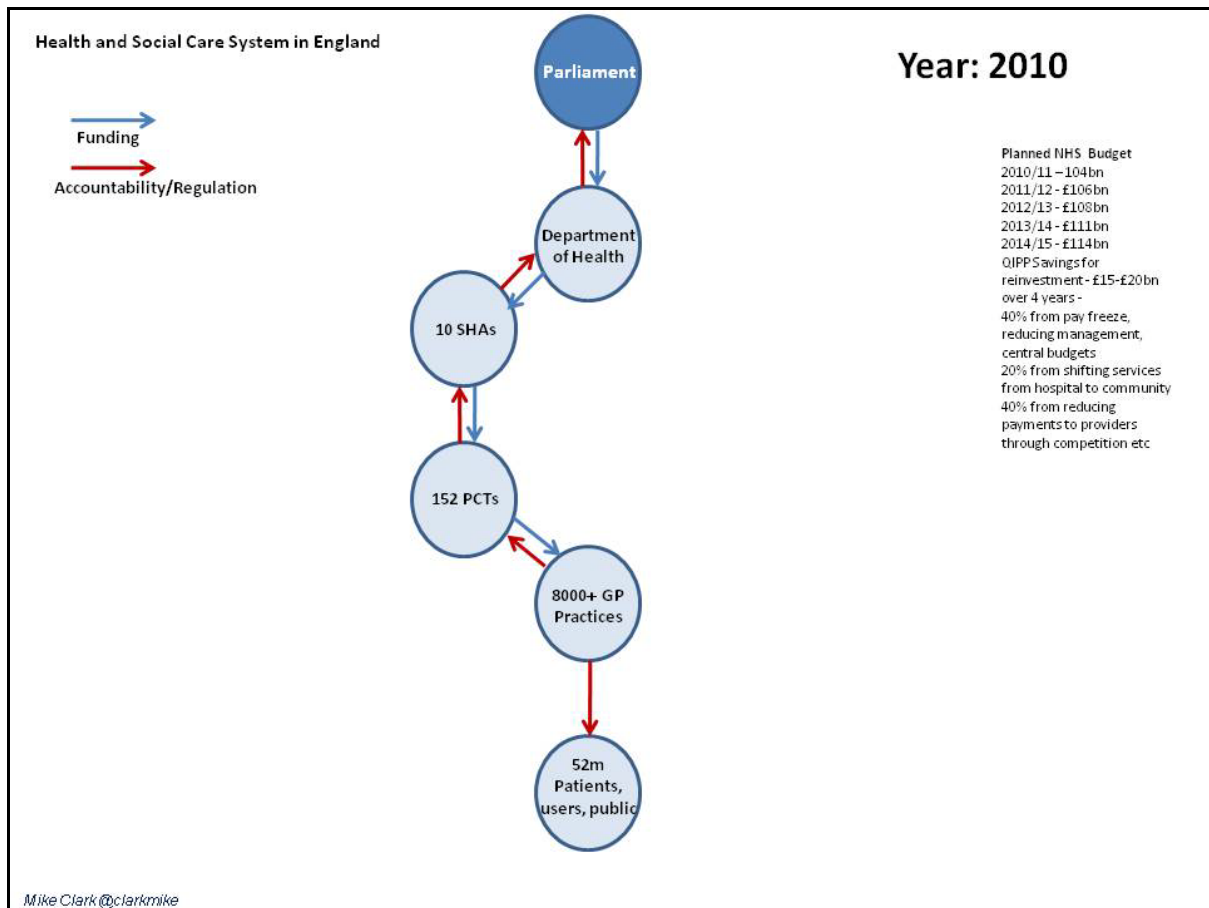
A map is available which covers all of the main links.

If you would like daily information on #telecare and #telehealth, then a Twitter stream is now available at the TelecareLIN web site (you do not need to register on Twitter and it is accessible to organisations not able to connect directly to social media):

<http://www.telecarelin.org.uk/News/twitterStream/>

The monthly newsletter is available from <http://www.telecarelin.org.uk>

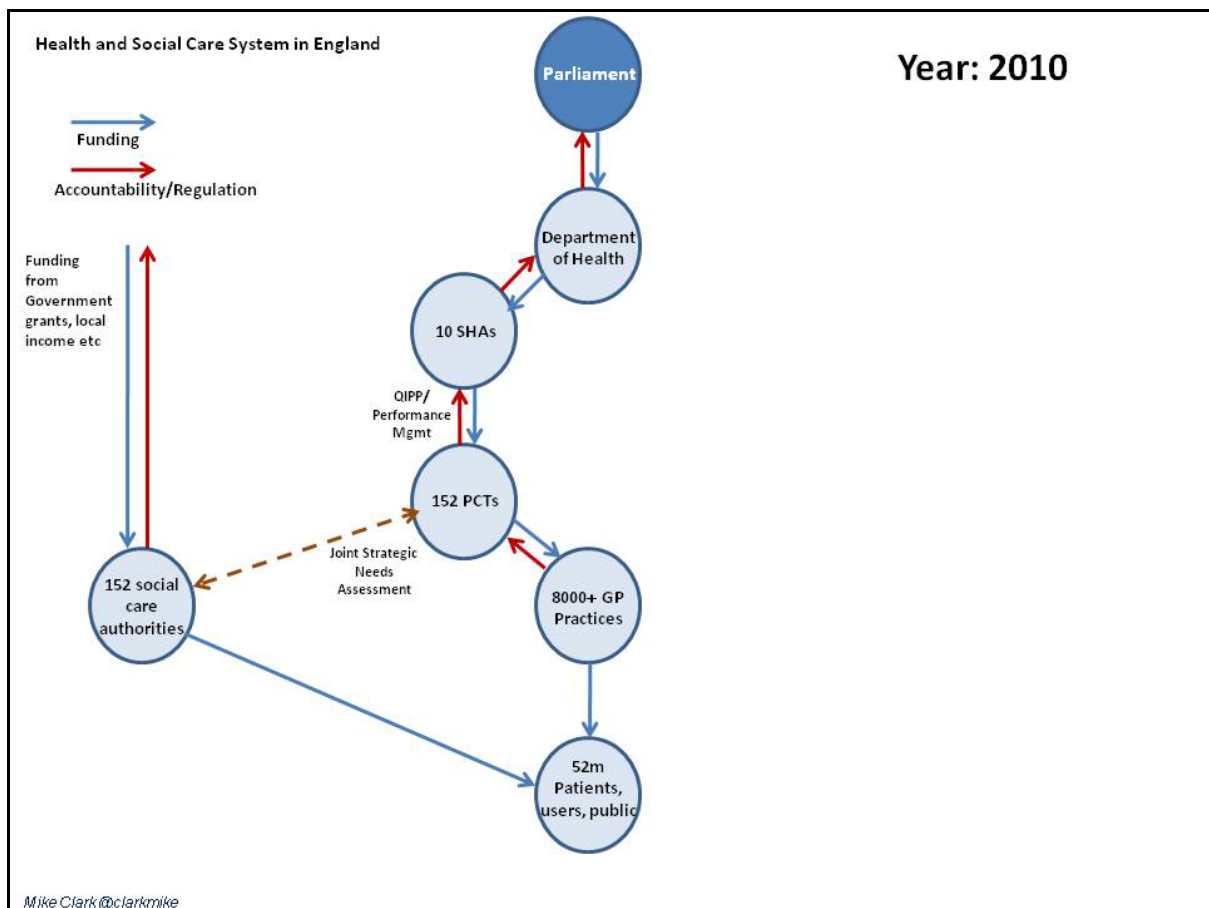
Prepared by Mike Clark (Twitter: @clarkmike) for the ALIP Knowledge Transfer Network and Telecare Learning and Improvement Network



Slide 1

Slide 1 shows the position back in mid-2010 at the time of the change in Government.

At that point in time there were 152 primary care trusts (PCTs) and 10 strategic health authorities (SHAs) in England. Public health services were with the Health Protection Agency, SHAs and PCTs.



Slide 2

At the time of publication of the ‘Liberating the NHS White Paper’ (July 2010), As well as 152 primary care trusts there were 152 local authorities with social care responsibilities. Over 80% of the PCTs were co-terminous with the local authorities.

A statutory requirement exists between local authorities and primary care trusts to produce a joint strategic needs assessment (JSNA).

The Quality Innovation Productivity and Improvement Programme (QIPP) aims to identify £20bn of efficiencies by 2014/15.

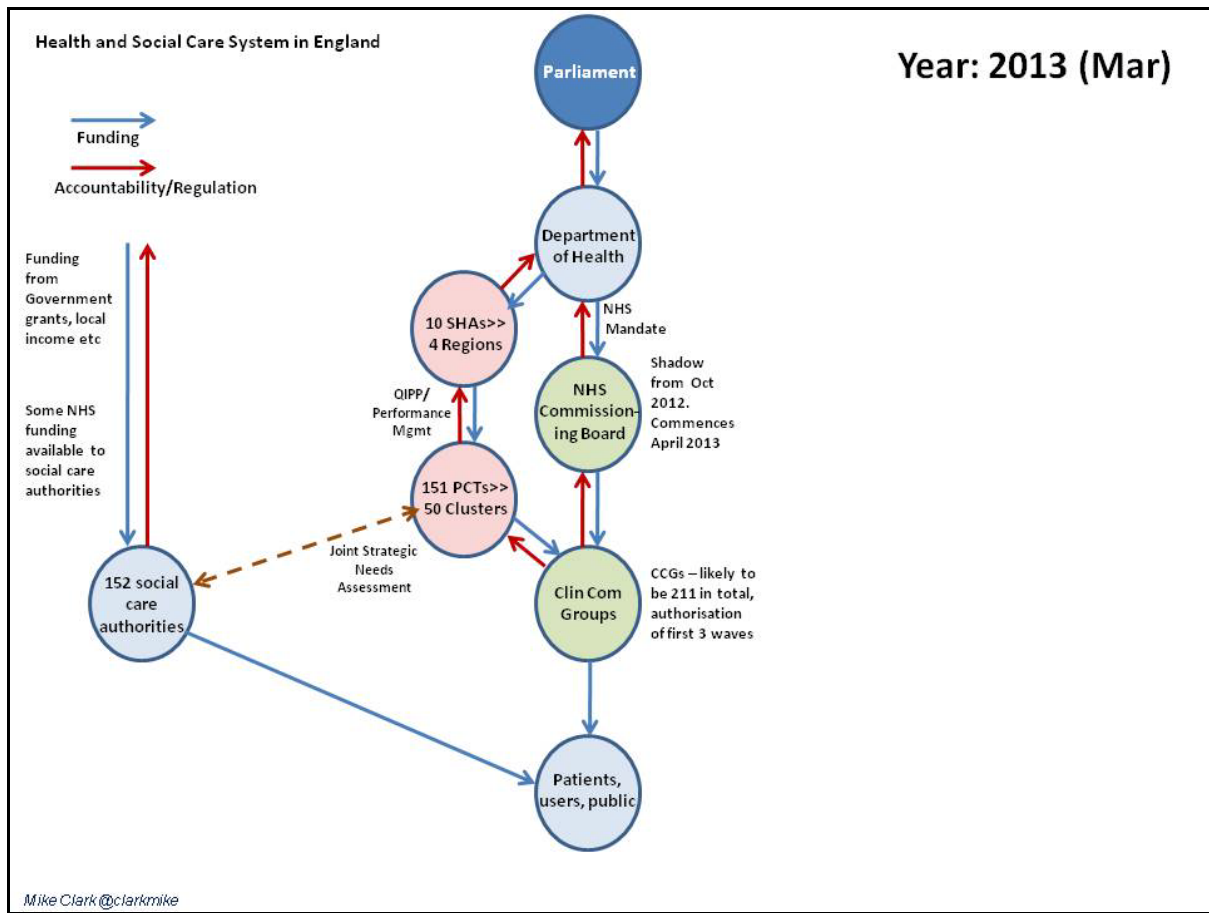
Links:

Equity and excellence: Liberating the NHS (July 2010)

http://www.dh.gov.uk/en/Publicationsandstatistics/Publications/PublicationsPolicyAndGuidance/DH_117353

Joint strategic needs assessment

http://www.dh.gov.uk/en/Publicationsandstatistics/Publications/PublicationsPolicyAndGuidance/DH_081097



Slide 3

As we come right up to date, the 10 strategic health authorities have been brought together across four regions and the PCTs (now 151) have been arranged in 50 clusters. The SHAs and PCTs will not exist from 1 April 2013. The NHS Commissioning Board has been in shadow form since October 2012 and goes live on 1 April 2013. The Department of Health issued an NHS Mandate in November 2012 covering the period 2013-2015 and the 151 PCTs are transforming to 211 Clinical Commissioning Groups (CCGs) ready for 1 April 2013.

Links:

Health and Social Care Act 2012

<http://www.legislation.gov.uk/ukpga/2012/7/contents/enacted/data.htm>

NHS Commissioning Board

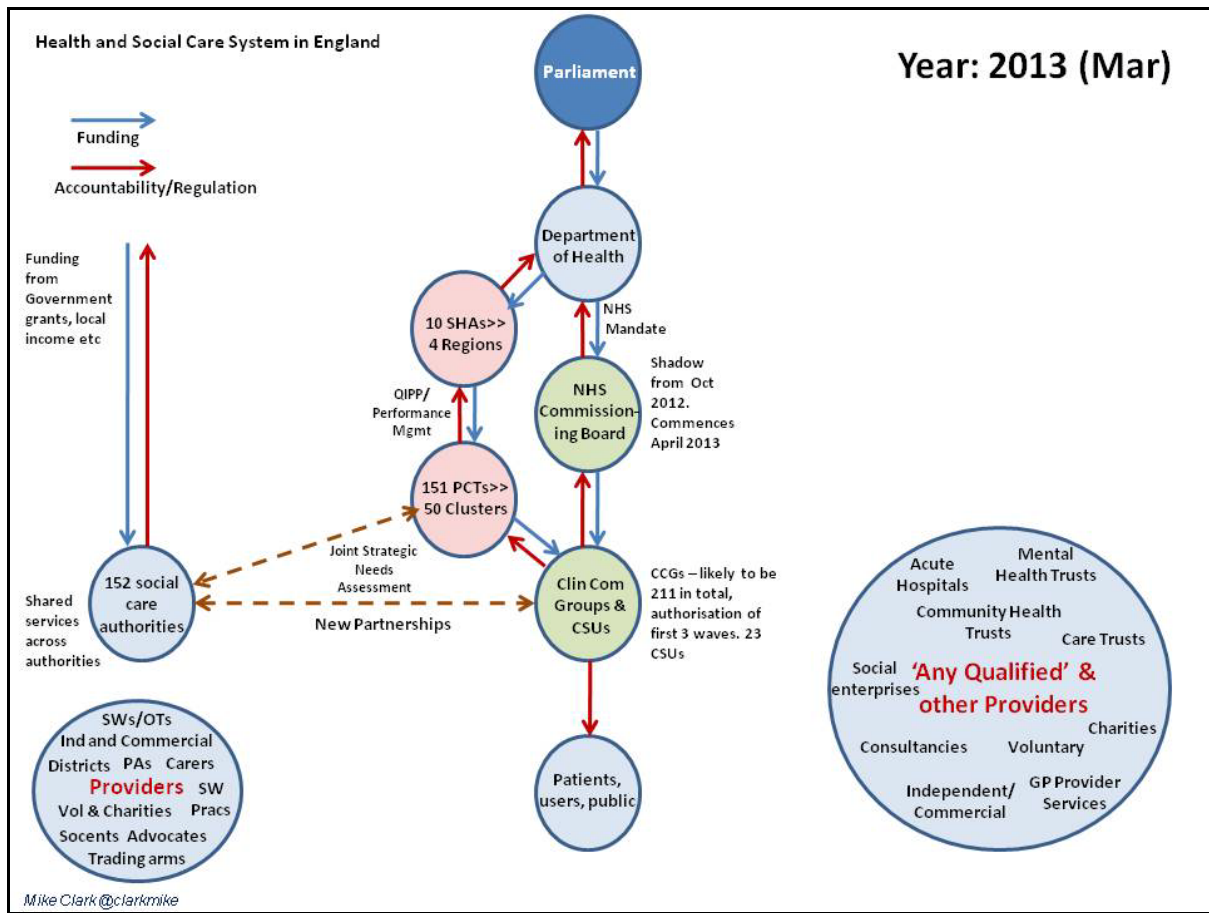
<http://www.commissioningboard.nhs.uk/>

NHS Mandate

<http://mandate.dh.gov.uk/>

Resources for Clinical Commissioning Groups

<http://www.commissioningboard.nhs.uk/resources/resources-for-ccgs/>



Slide 3

The landscape is, of course, more complicated as there are a diverse number of providers of health and social care services. These vary from large established organisations such as hospital trusts through to individual personal assistants provided as part of social care personal budgets. There is little provider coordination or integration across services although some 'integrated' teams and programmes do exist.

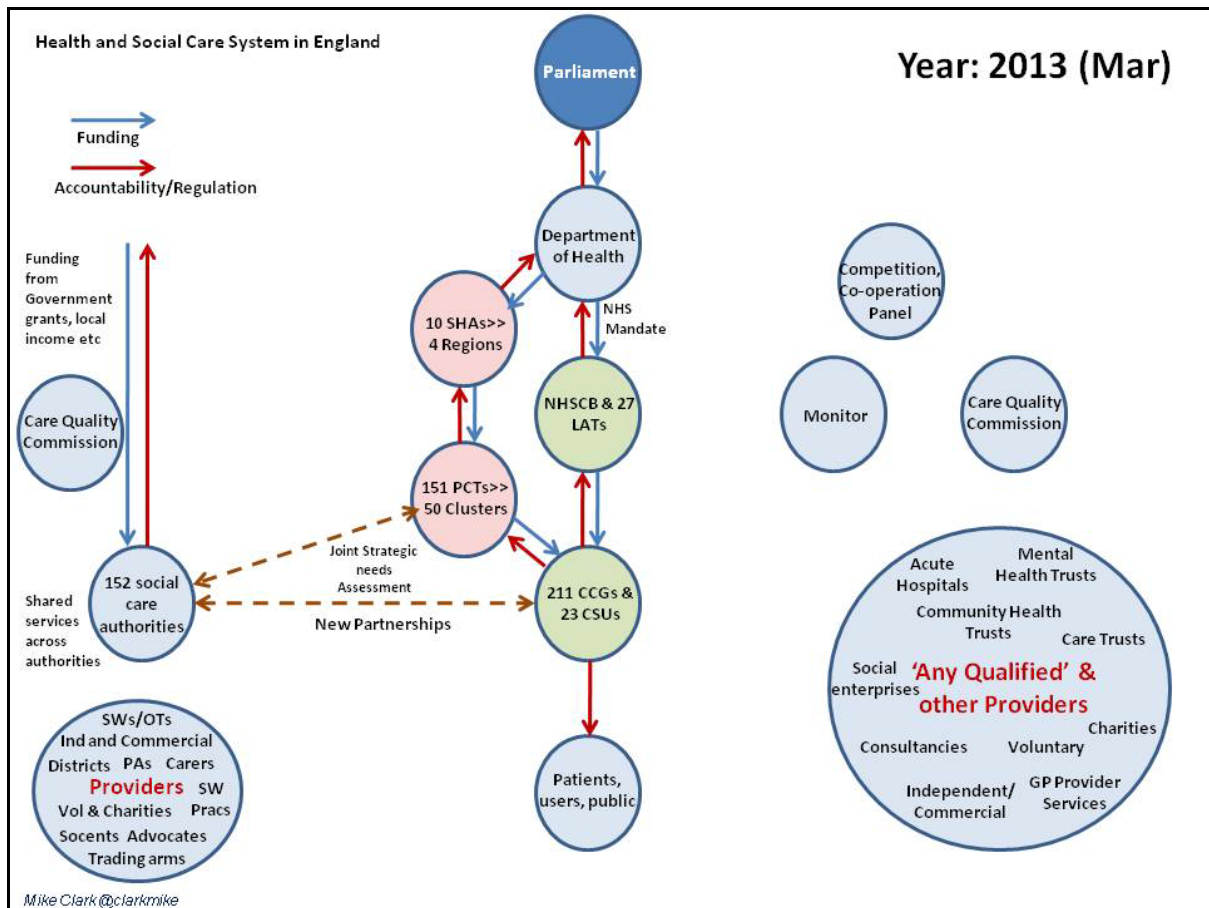
Links:

Any Qualified Provider

<http://www.nhs.uk/choiceintheNHS/Yourchoices/any-qualified-provider/Pages/aqp.aspx>

Integrated care for patients and populations: Improving outcomes by working together (The King's Fund)

<http://www.kingsfund.org.uk/publications/integrated-care-patients-and-populations-improving-outcomes-working-together>



Slide 4

The NHS Commissioning Board will have 27 Local Area Teams (LATs) and there are 23 Commissioning Support Units (CSUs) to provide services to the 211 Clinical Commissioning Groups.

There are also regulators and licensing bodies such as the Care Quality Commission and Monitor.

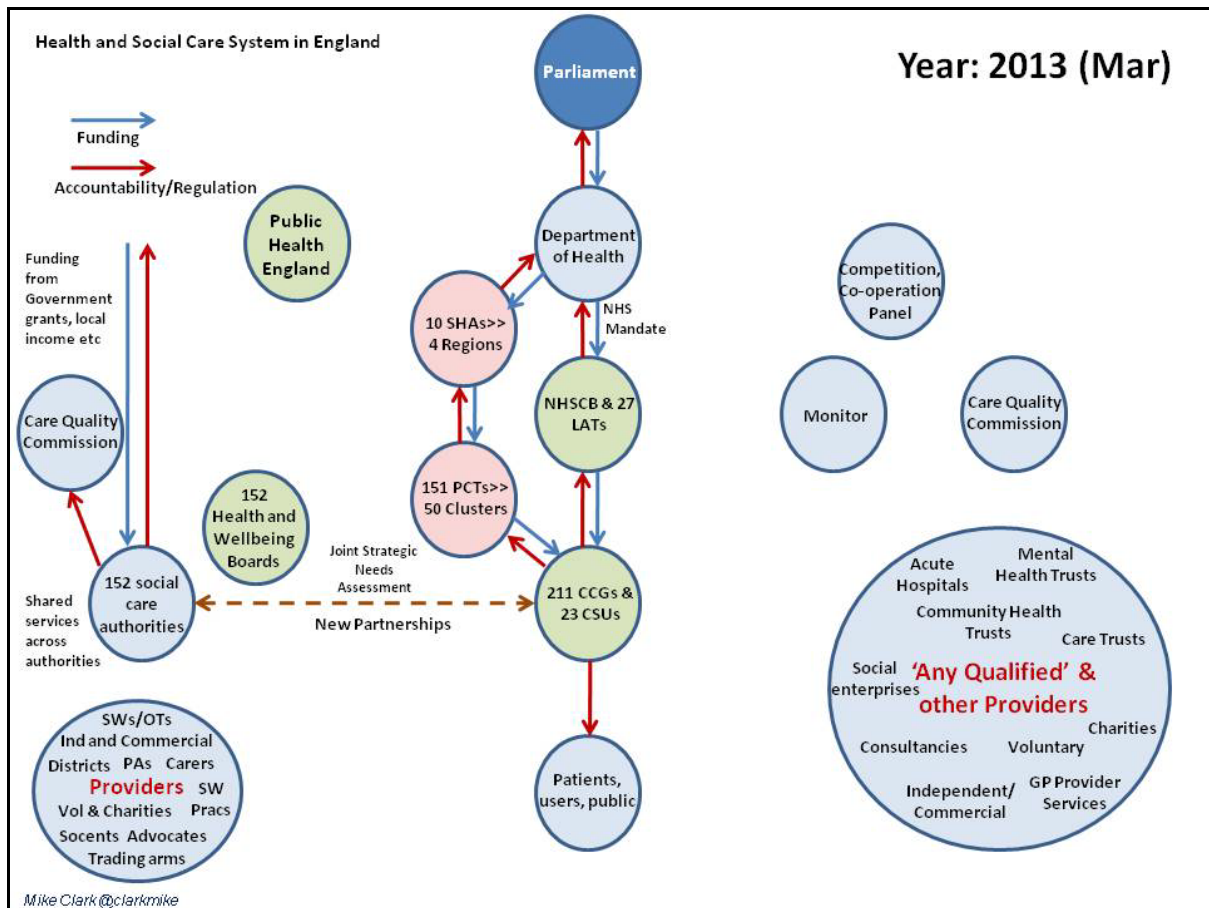
Links:

Care Quality Commission

<http://www.cqc.org.uk/>

Monitor

<http://www.monitor-nhsft.gov.uk/>



Slide 5

The Public Health role will move to the 152 social care authorities led at national level by Public Health England.

Health and Wellbeing Boards are being set up between the 152 local authorities and the 211 Clinical Commissioning Groups. The Boards will have the responsibility for the Joint Strategic Needs Assessment and the development of Health and Wellbeing strategies for the communities they cover. Some local authorities will need to coordinate activities with a number of CCGs (eg Surrey has 5 CCGs compared to one PCT).

Links:

Public Health England

<http://healthandcare.dh.gov.uk/tag/public-health-england/>

A short guide to health and wellbeing boards

<http://healthandcare.dh.gov.uk/hwb-guide/>

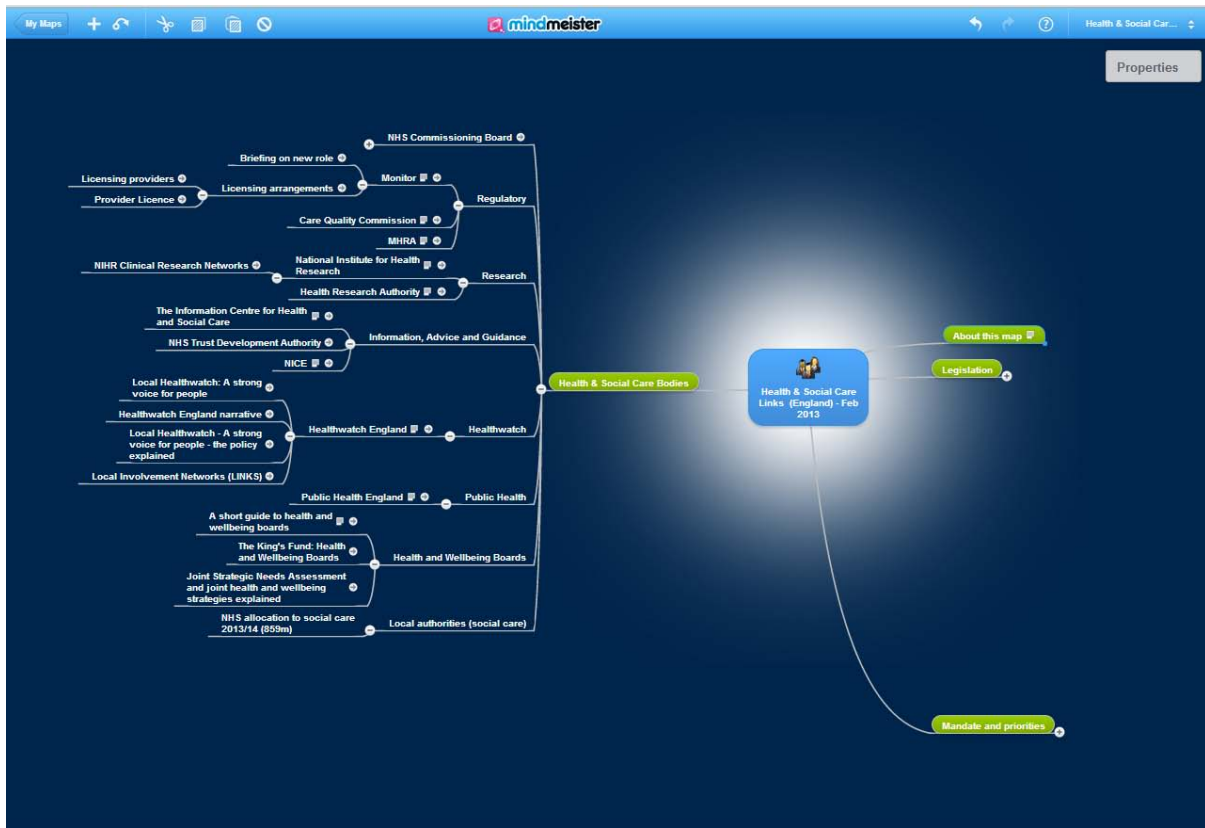
Local Authorities – Health and Wellbeing Boards and Health Scrutiny Regulations

<http://www.commissioningboard.nhs.uk/2013/02/15/hwb/>

Surrey Health and Wellbeing Board

<http://www.surreycc.gov.uk/social-care-and-health/surrey-health-and-wellbeing-board>

As well as the links included with each slide, a map is available covering a wide range of information on health and social care in England:



Link for map: <https://www.mindmeister.com/263427225>

Newsletter supplement prepared by Mike Clark and brought to you by the Telecare LIN on behalf of the Technology Strategy Board



Disclaimer: "We provide this newsletter supplement for information purposes only and neither the Technology Strategy Board nor the authors accept any liability whatsoever for inaccuracies, errors or omissions therein or for any consequences arising therefrom."

